

**ELECTRONIC COPY**

## LABORATORY GROWN DIAMOND REPORT

October 5, 2023	
IGI Report Number	LG602354312
Description	LABORATORY GROWN DIAMOND
Shape and Cutting Style	ROUND BRILLIANT
Measurements	6.75 - 6.78 X 4.13 MM

## GRADING RESULTS

Carat Weight	1.17 CARAT
Color Grade	F
Clarity Grade	VS 1
Cut Grade	IDEAL

### ADDITIONAL GRADING INFORMATION

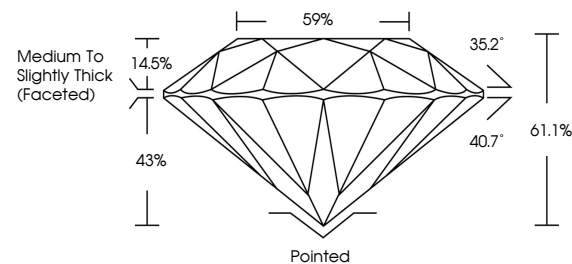
Polish	EXCELLENT
Symmetry	EXCELLENT
Fluorescence	NONE
Inscription(s)	15 LG602354312

Comments: This Laboratory Grown Diamond was created by Chemical Vapor Deposition (CVD) growth process and may include post-growth treatment.  
Type IIa

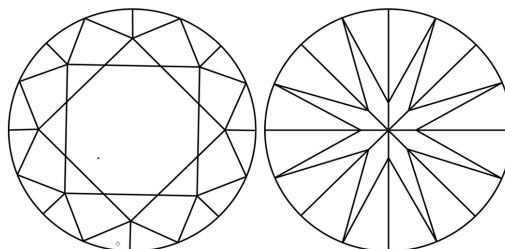
## LABORATORY GROWN DIAMOND REPORT

LG602354312  
Report verification at [igi.org](http://igi.org)

## PROPORTIONS



## CLARITY CHARACTERISTICS



### KEY TO SYMBOLS

Red symbols indicate internal characteristics.  
Green symbols indicate external characteristics.

LABORATORY GROWN  
DIAMOND REPORT

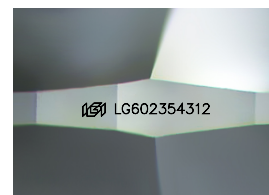
## GRADING SCALES

## CLARITY

IF	VVS <sup>1-2</sup>	VS <sup>1-2</sup>	SI <sup>1-2</sup>	I <sup>1-3</sup>
Internally Flawless	Very Very Slightly Included	Very Slightly Included	Slightly Included	Included

**COLOR**

D E F G H I J Faint Very Light Light



Sample Image Used

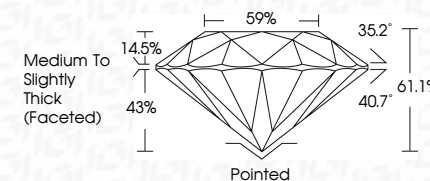


© IGI 2020, International Gemological Institute

FD - 10 20



October 5, 2023	
IGI Report Number	LG602354312
Description	LABORATORY GROWN DIAMOND
Shape and Cutting Style	ROUND BRILLIANT
Measurements	6.75 - 6.78 X 4.13 MM
<b>GRADING RESULTS</b>	
Carat Weight	1.17 CARAT
Color Grade	F
Clarity Grade	VS 1
Cut Grade	IDEAL



### ADDITIONAL GRADING INFORMATION

Polish	EXCELLENT
Symmetry	EXCELLENT
Fluorescence	NONE
Inscription(s)	<del>153</del> LG602354312
<p>Comments: This Laboratory Grown Diamond was created by Chemical Vapor Deposition (CVD) growth process and may include post-growth treatment.</p> <p>Type IIa</p>	

<b>G Report No LG602364312</b>	<b>1.17 CARAT</b>	<b>VSI</b>	<b>EXCELLENT</b>	<b>Poited</b>	<b>NONE</b>	<b>#61LG602364312</b>
<b>ROUND BRILLIANT</b>	<b>F</b>	<b>IDEAL</b>	<b>61.1%</b>	<b>89%</b>		
<b>4.75 - 4.78 X 4.13 MM</b>				<b>Medium to Slightly Thick (Faceted)</b>		
<b>Color Weight</b>	<b>Color Grade</b>	<b>Clarity Grade</b>	<b>Cut Grade</b>	<b>Culet</b>	<b>Symmetry</b>	<b>Inscriptions(s)</b>
			<b>Depth</b>	<b>Polish</b>	<b>Fluorescence</b>	
			<b>Table</b>	<b>Match</b>		
			<b>Girdle</b>			

**Comments:**  
 This Heavy Crown Diamond was treated by Chemical Vapor Deposition (CVD) growth process and may include post-growth treatment.  
**Type IIA**