



ELECTRONIC COPY

LABORATORY GROWN DIAMOND REPORT

| | |
|-------------------------|-----------------------------|
| September 27, 2023 | |
| IGI Report Number | LG600336855 |
| Description | LABORATORY GROWN DIAMOND |
| Shape and Cutting Style | EMERALD CUT |
| Measurements | 7.93 X 5.56 X 3.52 MM |

GRADING RESULTS

| | |
|---------------|------------|
| Carat Weight | 1.57 CARAT |
| Color Grade | G |
| Clarity Grade | VS 1 |

ADDITIONAL GRADING INFORMATION

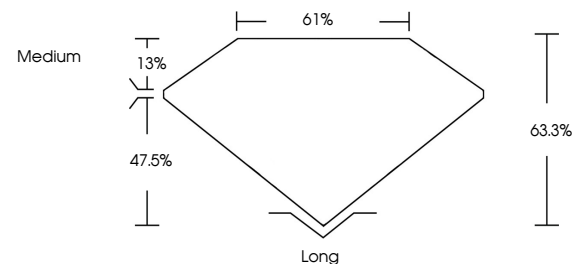
| | |
|----------------|---|
| Polish | EXCELLENT |
| Symmetry | EXCELLENT |
| Fluorescence | NONE |
| Inscription(s) |  LG600336855 |

Comments: This Laboratory Grown Diamond was created by Chemical Vapor Deposition (CVD) growth process and may include post-growth treatment.
Type IIa

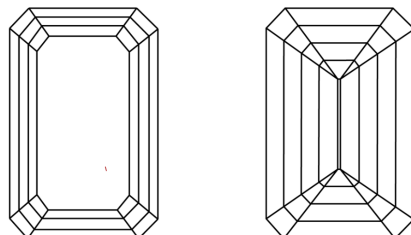
LABORATORY GROWN DIAMOND REPORT

LG600336855
Report verification at igi.org

PROPORTIONS



CLARITY CHARACTERISTICS



KEY TO SYMBOLS

Red symbols indicate internal characteristics.
Green symbols indicate external characteristics.

LABORATORY GROWN
DIAMOND REPORT

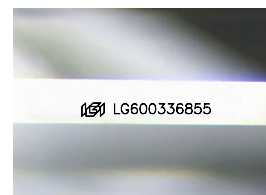
GRADING SCALES

CLARITY

| IF | VVS ¹⁻² | VS ¹⁻² | SI ¹⁻² | I ¹⁻³ |
|------------------------|--------------------------------|---------------------------|----------------------|------------------|
| Internally Flawless | Very Very Slightly Included | Very Slightly Included | Slightly Included | Included |

COLOR

D E F G H I J Faint Very Light Light



Sample Image Used



© IGI 2020, International Gemological Institute

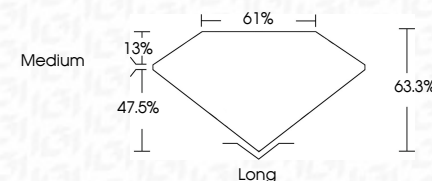
FD - 10 20



THIS DOCUMENT WAS PRODUCED WITH THE FOLLOWING SECURITY MEASURES: SPECIAL DOCUMENT PAPER, INK SCREENS, WATERMARK, BACKGROUND DESIGNS, HOLOGRAM AND OTHER SECURITY FEATURES NOT LISTED AND DO EXCEED DOCUMENT SECURITY INDUSTRY GUIDELINES

LABORATORY GROWN DIAMOND REPORT

| | |
|-------------------------|-----------------------------|
| September 27, 2023 | |
| IGI Report Number | LG600336855 |
| Description | LABORATORY GROWN DIAMOND |
| Shape and Cutting Style | EMERALD CUT |
| Measurements | 7.93 X 5.56 X 3.52 MM |
| GRADING RESULTS | |
| Carat Weight | 1.57 CARAT |
| Color Grade | G |
| Clarity Grade | VS 1 |



ADDITIONAL GRADING INFORMATION

| | |
|----------------|------------------|
| Polish | EXCELLENT |
| Symmetry | EXCELLENT |
| Fluorescence | NONE |
| Inscription(s) | (15) LG600336855 |

Comments: This Laboratory Grown Diamond was created by Chemical Vapor Deposition (CVD) growth process and may include post-growth treatment.
Type IIa



September 27, 2023
IGI Report No LG600336855

| | |
|-----------------------|-----------------|
| 7.93 X 5.56 X 3.52 MM | 1.57 CARAT |
| Color Grade | G |
| Clarity Grade | VS 1 |
| Depth | 63.9% |
| Table | 61% |
| Girdle | Medium |
| Culet | Long |
| Polish | EXCELLENT |
| Symmetry | EXCELLENT |
| Fluorescence | NONE |
| Inscriptions | None / Comments |

Comments:
This Laboratory Grown Diamond was created by Chemical Vapor Deposition (CVD) growth process and may include post-growth treatment.

www.igi.org