



ELECTRONIC COPY

LABORATORY GROWN DIAMOND REPORT

June 17, 2023	
IGI Report Number	LG586357778
Description	LABORATORY GROWN DIAMOND
Shape and Cutting Style	ROUND BRILLIANT
Measurements	10.94 - 11.00 X 6.78 MM

GRADING RESULTS

Carat Weight	5.02 CARATS
Color Grade	E
Clarity Grade	VS 2
Cut Grade	IDEAL

ADDITIONAL GRADING INFORMATION

Polish	EXCELLENT
Symmetry	EXCELLENT
Fluorescence	NONE
Inscription(s)	15 LG586357778

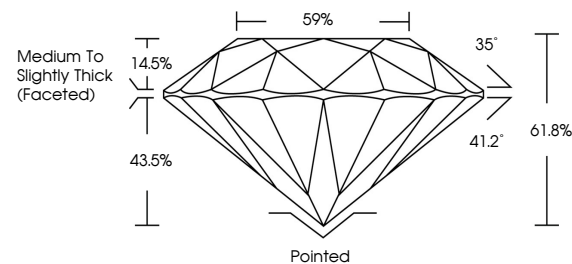
Comments: This Laboratory Grown Diamond was created by Chemical Vapor Deposition (CVD) growth process and may include post-growth treatment. Type IIa

LABORATORY GROWN DIAMOND REPORT

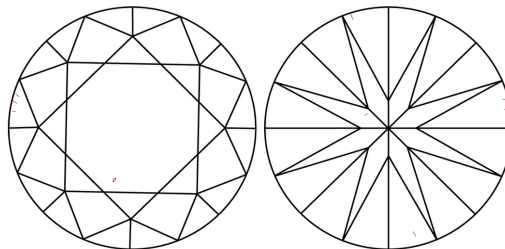
LG586357778

Report verification at igi.org

PROPORTIONS



CLARITY CHARACTERISTICS



KEY TO SYMBOLS

Red symbols indicate internal characteristics.
Green symbols indicate external characteristics.

LABORATORY GROWN
DIAMOND REPORT

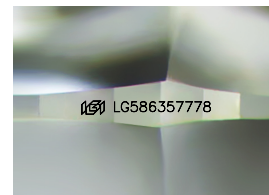
GRADING SCALES

CLARITY

IF	VVS ¹⁻²	VS ¹⁻²	SI ¹⁻²	I ¹⁻³
Internally Flawless	Very Very Slightly Included	Very Slightly Included	Slightly Included	Included

COLOR

D E F G H I J Faint Very Light Light



Sample Image Used



© IGI 2020, International Gemological Institute

FD - 10 20

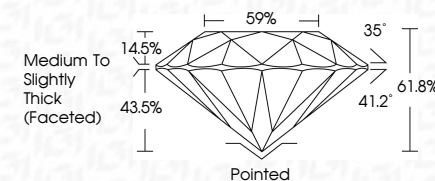
www.igi.org

LABORATORY GROWN DIAMOND REPORT

June 17, 2023	
IGI Report Number	LG58635778
Description	LABORATORY GROWN DIAMOND
Shape and Cutting Style	ROUND BRILLIANT
Measurements	10.94 - 11.00 X 6.78 MM

GRADING RESULTS

Carat Weight	5.02 CARATS
Color Grade	E
Clarity Grade	VS 2
Cut Grade	IDEAL



ADDITIONAL GRADING INFORMATION

Polish	EXCELLENT
Symmetry	EXCELLENT
Fluorescence	NONE
Inscription(s)	 LG586357778

Comments: This Laboratory Grown Diamond was created by Chemical Vapor Deposition (CVD) growth process and may include post-growth treatment.
Type IIa



IG

June 17, 2023	GI report No LG56835778	5.02 CARATS	Vs2	IDEAL	61.6%	59%	Medium to slightly tweak (faced)	Parted	EXCELLENT	EXCELLENT	NONE	(#) LG56835778	Comments: Created by Crown Diamond via Chemical Vapor Deposition (CVD) growth process and may include post-growth treatment.
ROUND BRILLIANT		10.04 - 11.00 X 6.78 MM	Color Grade	Clarity Grade	Cut Grade	Depth	Table	Girdle	Fluorescence	Symmetry	Inscriptions(s)		Type IIA