



ELECTRONIC COPY

LG808608635
Report verification at igi.org



June 15, 2026

IGI Report Number **LG808608635**

Description **LABORATORY GROWN DIAMOND**

Shape and Cutting Style **CUSHION BRILLIANT**

Measurements **10.94 X 7.98 X 5.06 MM**

GRADING RESULTS

Carat Weight **3.52 CARATS**

Color Grade **VERY LIGHT BROWN**

Clarity Grade **VS 1**

June 15, 2026
IGI Report Number **LG808608635**
Description **LABORATORY GROWN DIAMOND**
Shape and Cutting Style **CUSHION BRILLIANT**
Measurements **10.94 X 7.98 X 5.06 MM**

GRADING RESULTS

Carat Weight **3.52 CARATS**

Color Grade **VERY LIGHT BROWN**

Clarity Grade **VS 1**

ADDITIONAL GRADING INFORMATION

Polish **EXCELLENT**

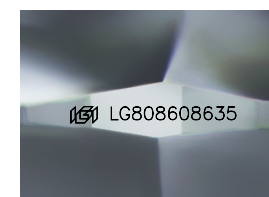
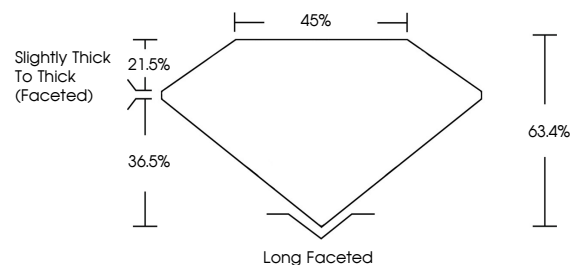
Symmetry **EXCELLENT**

Fluorescence **NONE**

Inscription(s) **IGI LG808608635**

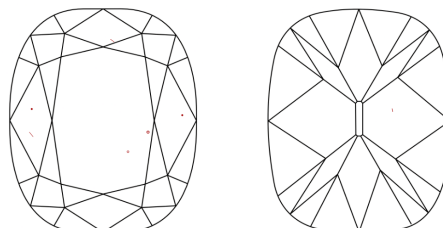
Comments: This Laboratory Grown Diamond was created by Chemical Vapor Deposition (CVD) growth process.
Type IIa

PROPORTIONS



Sample Image Used

CLARITY CHARACTERISTICS



KEY TO SYMBOLS

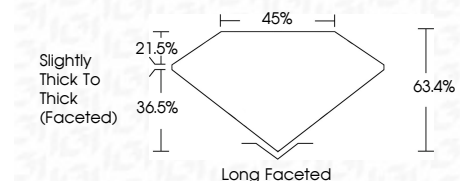
Red symbols indicate internal characteristics.
Green symbols indicate external characteristics.

COLOR

D E F G H I J Faint Very Light Light

CLARITY

FL	IF	VS ¹⁻²	VS ¹⁻²	SI ¹⁻²	I ¹⁻³
Flawless	Internally Flawless	Very Very Slightly Included	Very Slightly Included	Slightly Included	Included



ADDITIONAL GRADING INFORMATION

Polish **EXCELLENT**

Symmetry **EXCELLENT**

Fluorescence **NONE**

Inscription(s) **IGI LG808608635**

Comments: This Laboratory Grown Diamond was created by Chemical Vapor Deposition (CVD) growth process.
Type IIa



June 15, 2026
IGI Report No. LG808608635
CUSHION BRILLIANT
10.94 X 7.98 X 5.06 MM
3.52 CARATS
VERY LIGHT BROWN
VS 1
63.4%
45%
Slightly Thick To Thick (Faceted)
Long Faceted
EXCELLENT
EXCELLENT
NONE
IGI LG808608635
Comments: This Laboratory Grown Diamond was created by Chemical Vapor Deposition (CVD) growth process.
Type IIa