



ELECTRONIC COPY

LG787666026
Report verification at igi.org



June 4, 2026
IGI Report Number **LG787666026**
Description **LABORATORY GROWN DIAMOND**
Shape and Cutting Style **SQUARE CUSHION MIXED CUT**
Measurements **11.56 X 11.54 X 2.94 MM**
GRADING RESULTS
Carat Weight **3.74 CARATS**
Color Grade **FANCY INTENSE GREEN**
Clarity Grade **VVS 2**

LABORATORY GROWN DIAMOND REPORT

June 4, 2026
IGI Report Number **LG787666026**
Description **LABORATORY GROWN DIAMOND**
Shape and Cutting Style **SQUARE CUSHION MIXED CUT**
Measurements **11.56 X 11.54 X 2.94 MM**

GRADING RESULTS

Carat Weight **3.74 CARATS**
Color Grade **FANCY INTENSE GREEN**
Clarity Grade **VVS 2**

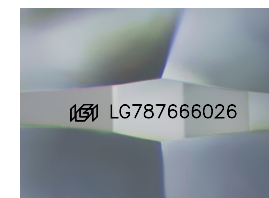
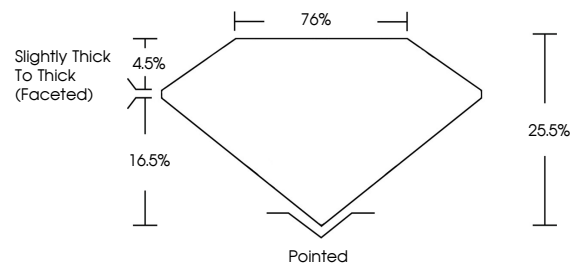
ADDITIONAL GRADING INFORMATION

Polish **EXCELLENT**
Symmetry **EXCELLENT**
Fluorescence **NONE**
Inscription(s) **IGI LG787666026**

Comments: This Laboratory Grown Diamond was created by Chemical Vapor Deposition (CVD) growth process.
Indications of post-growth treatment.

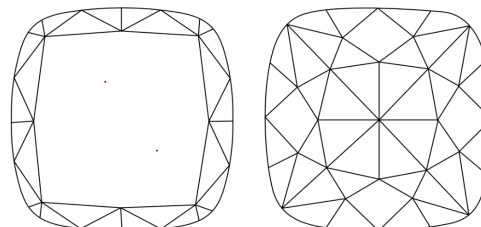
Secondary color: Blue

PROPORTIONS



Sample Image Used

CLARITY CHARACTERISTICS



KEY TO SYMBOLS

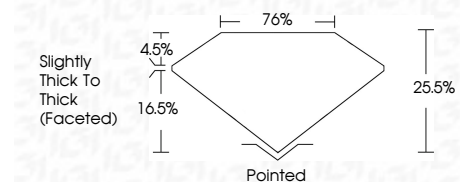
Red symbols indicate internal characteristics.
Green symbols indicate external characteristics.

COLOR

D E F G H I J Faint Very Light Light

CLARITY

FL	IF	VS ¹⁻²	VS ¹⁻²	SI ¹⁻²	I ¹⁻³
Flawless	Internally Flawless	Very Very Slightly Included	Very Slightly Included	Slightly Included	Included



ADDITIONAL GRADING INFORMATION

Polish **EXCELLENT**
Symmetry **EXCELLENT**
Fluorescence **NONE**
Inscription(s) **IGI LG787666026**
Comments: This Laboratory Grown Diamond was created by Chemical Vapor Deposition (CVD) growth process.
Indications of post-growth treatment.
Secondary color: Blue



IGI



June 4, 2026
IGI Report No. **LG787666026**
SQUARE CUSHION MIXED CUT
11.56 X 11.54 X 2.94 MM
3.74 CARATS
FANCY INTENSE GREEN
VVS 2
25.5%
76%
Slightly Thick To Thick (Faceted)
Pointed
EXCELLENT
EXCELLENT
NONE
IGI LG787666026

Comments: This Laboratory Grown Diamond was created by Chemical Vapor Deposition (CVD) growth process.
Indications of post-growth treatment.
Secondary color: Blue