



ELECTRONIC COPY

LG800635304
Report verification at igi.org



May 27, 2026
IGI Report Number **LG800635304**
Description **LABORATORY GROWN DIAMOND**
Shape and Cutting Style **CUSHION MODIFIED BRILLIANT**
Measurements **9.46 X 7.50 X 5.04 MM**
GRADING RESULTS
Carat Weight **3.16 CARATS**
Color Grade **LIGHT BROWN**
Clarity Grade **VVS 2**

LABORATORY GROWN DIAMOND REPORT

May 27, 2026
IGI Report Number **LG800635304**
Description **LABORATORY GROWN DIAMOND**
Shape and Cutting Style **CUSHION MODIFIED BRILLIANT**
Measurements **9.46 X 7.50 X 5.04 MM**

GRADING RESULTS

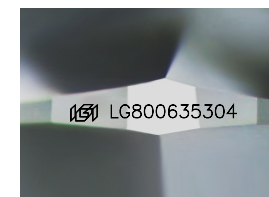
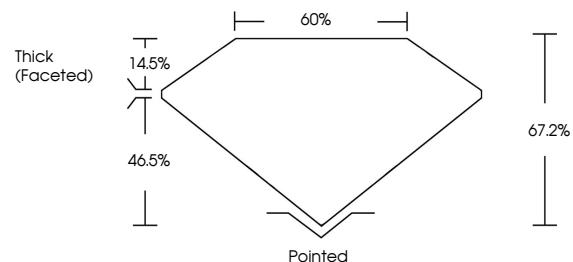
Carat Weight **3.16 CARATS**
Color Grade **LIGHT BROWN**
Clarity Grade **VVS 2**

ADDITIONAL GRADING INFORMATION

Polish **EXCELLENT**
Symmetry **EXCELLENT**
Fluorescence **NONE**
Inscription(s) **LG800635304**

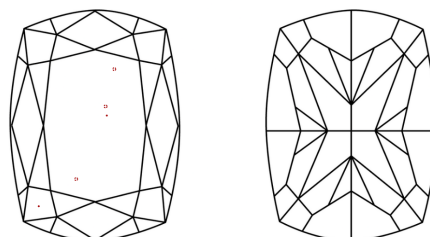
Comments: This Laboratory Grown Diamond was created by Chemical Vapor Deposition (CVD) growth process.
Type IIa

PROPORTIONS



Sample Image Used

CLARITY CHARACTERISTICS



KEY TO SYMBOLS

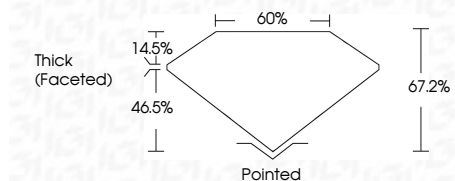
Red symbols indicate internal characteristics.
Green symbols indicate external characteristics.

COLOR

D E F G H I J Faint Very Light Light

CLARITY

| FL | IF | VVS ¹⁻² | VS ¹⁻² | SI ¹⁻² | I ¹⁻³ |
|----------|---------------------|-----------------------------|------------------------|-------------------|------------------|
| Flawless | Internally Flawless | Very Very Slightly Included | Very Slightly Included | Slightly Included | Included |



ADDITIONAL GRADING INFORMATION

Polish **EXCELLENT**
Symmetry **EXCELLENT**
Fluorescence **NONE**
Inscription(s) **LG800635304**
Comments: This Laboratory Grown Diamond was created by Chemical Vapor Deposition (CVD) growth process.
Type IIa



May 27, 2026
IGI Report No LG800635304
CUSHION MODIFIED BRILLIANT
3.16 CARATS
LIGHT BROWN
VVS 2
67.2%
60%
Thick (Faceted)
Pointed
EXCELLENT
EXCELLENT
NONE
NONE
IGI LG800635304
Comments: This Laboratory Grown Diamond was created by Chemical Vapor Deposition (CVD) growth process.
Type IIa