



ELECTRONIC COPY

LG749582349
Report verification at igi.org



December 2, 2025

IGI Report Number **LG749582349**

Description **LABORATORY GROWN DIAMOND**

Shape and Cutting Style **CUSHION MODIFIED BRILLIANT**

Measurements **10.52 X 7.56 X 4.97 MM**

GRADING RESULTS

Carat Weight **3.27 CARATS**

Color Grade **D**

Clarity Grade **VVS 2**

Cut Grade **VERY GOOD**

December 2, 2025
IGI Report Number **LG749582349**
Description **LABORATORY GROWN DIAMOND**
Shape and Cutting Style **CUSHION MODIFIED BRILLIANT**
Measurements **10.52 X 7.56 X 4.97 MM**

GRADING RESULTS

Carat Weight **3.27 CARATS**

Color Grade **D**

Clarity Grade **VVS 2**

Cut Grade **VERY GOOD**

ADDITIONAL GRADING INFORMATION

Polish **EXCELLENT**

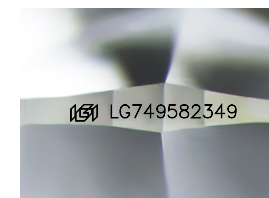
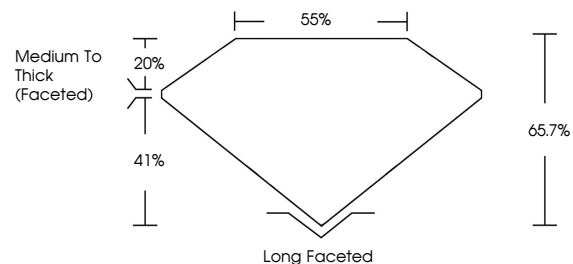
Symmetry **EXCELLENT**

Fluorescence **NONE**

Inscription(s) **LG749582349**

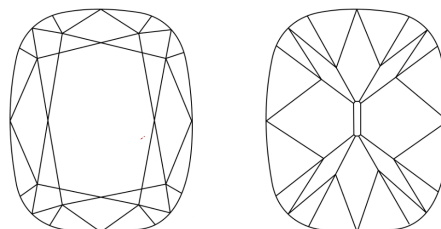
Comments: As Grown - No indication of post-growth treatment.
This Laboratory Grown Diamond was created by High Pressure High Temperature (HPHT) growth process.
Type II

PROPORTIONS



Sample Image Used

CLARITY CHARACTERISTICS



KEY TO SYMBOLS

Red symbols indicate internal characteristics.
Green symbols indicate external characteristics.

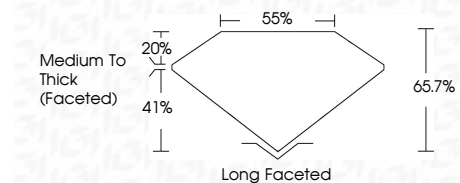
COLOR

D E F G H I J Faint Very Light Light

CLARITY

FL IF VVS¹⁻² VS¹⁻² SI¹⁻² I¹⁻³

Flawless Internally Flawless Very Very Slightly Included Very Slightly Included Slightly Included Included



ADDITIONAL GRADING INFORMATION

Polish **EXCELLENT**

Symmetry **EXCELLENT**

Fluorescence **NONE**

Inscription(s) **LG749582349**

Comments: As Grown - No indication of post-growth treatment.
This Laboratory Grown Diamond was created by High Pressure High Temperature (HPHT) growth process.
Type II



December 2, 2025	IGI Report No LG749582349	3.27 CARATS	D
CUSHION MODIFIED BRILLIANT		VERY GOOD	VVS 2
10.52 X 7.56 X 4.97 MM		66.7%	65%
Color Grade		Medium To Thick (Faceted)	
Clarity Grade		Long Faceted	
Depth		EXCELLENT	
Table		EXCELLENT	
Girdle		NONE	
Culet		IGI LG749582349	
Polish			
Symmetry			
Fluorescence			
Inscriptions(s)			

Comments: As Grown - No indication of post-growth treatment.
This Laboratory Grown Diamond was created by High Pressure High Temperature (HPHT) growth process.
Type II