



ELECTRONIC COPY

LG788619769
Report verification at igi.org



April 11, 2026
IGI Report Number **LG788619769**
Description **LABORATORY GROWN DIAMOND**
Shape and Cutting Style **CUSHION MODIFIED BRILLIANT**
Measurements **8.93 X 7.50 X 5.04 MM**
GRADING RESULTS
Carat Weight **3.17 CARATS**
Color Grade **FANCY INTENSE BLUE**
Clarity Grade **VVS 2**

LABORATORY GROWN DIAMOND REPORT

April 11, 2026
IGI Report Number **LG788619769**
Description **LABORATORY GROWN DIAMOND**
Shape and Cutting Style **CUSHION MODIFIED BRILLIANT**
Measurements **8.93 X 7.50 X 5.04 MM**

GRADING RESULTS

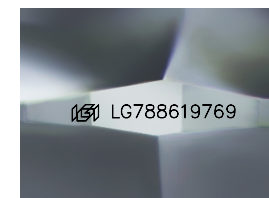
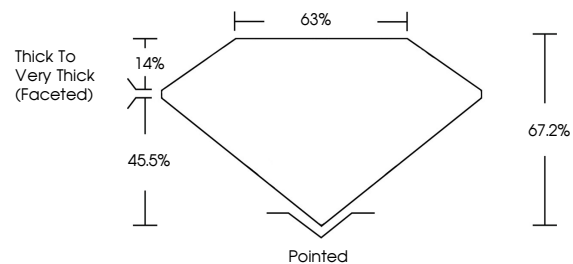
Carat Weight **3.17 CARATS**
Color Grade **FANCY INTENSE BLUE**
Clarity Grade **VVS 2**

ADDITIONAL GRADING INFORMATION

Polish **EXCELLENT**
Symmetry **EXCELLENT**
Fluorescence **NONE**
Inscription(s) **IGI LG788619769**

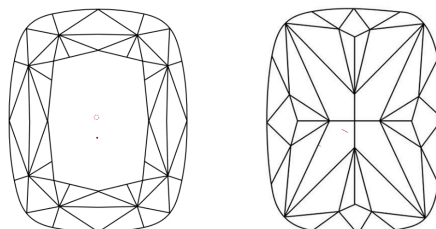
Comments: This Laboratory Grown Diamond was created by High Pressure High Temperature (HPHT) growth process.
Indications of post-growth treatment.

PROPORTIONS



Sample Image Used

CLARITY CHARACTERISTICS



KEY TO SYMBOLS

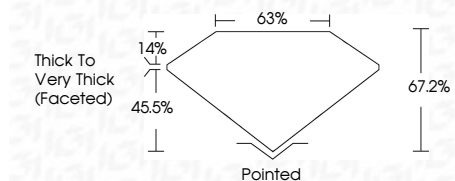
Red symbols indicate internal characteristics.
Green symbols indicate external characteristics.

COLOR

D E F G H I J Faint Very Light Light

CLARITY

FL	IF	VVS ¹⁻²	VS ¹⁻²	SI ¹⁻²	I ¹⁻³
Flawless	Internally Flawless	Very Very Slightly Included	Very Slightly Included	Slightly Included	Included



ADDITIONAL GRADING INFORMATION

Polish **EXCELLENT**
Symmetry **EXCELLENT**
Fluorescence **NONE**
Inscription(s) **IGI LG788619769**
Comments: This Laboratory Grown Diamond was created by High Pressure High Temperature (HPHT) growth process.
Indications of post-growth treatment.



April 11, 2026
IGI Report No **LG788619769**
CUSHION MODIFIED BRILLIANT
8.93 X 7.50 X 5.04 MM
Carat Weight **3.17 CARATS**
Color Grade **FANCY INTENSE BLUE**
Clarity Grade **VVS 2**
Depth **67.2%**
Table **63%**
Girdle **Thick to Very Thick (Faceted)**
Culet **Pointed**
Polish **EXCELLENT**
Symmetry **EXCELLENT**
Fluorescence **NONE**
Inscription(s) **IGI LG788619769**

Comments: This Laboratory Grown Diamond was created by High Pressure High Temperature (HPHT) growth process.
Indications of post-growth treatment.