



ELECTRONIC COPY

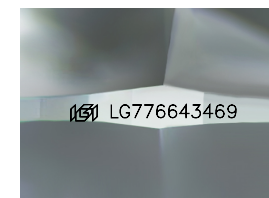
LG776643469
Report verification at igi.org



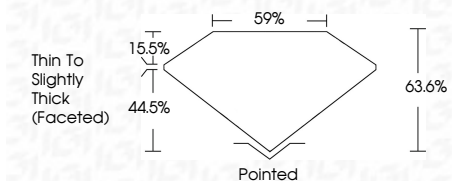
March 18, 2026
IGI Report Number **LG776643469**
Description **LABORATORY GROWN DIAMOND**
Shape and Cutting Style **SQUARE CUSHION BRILLIANT**
Measurements **8.90 X 8.87 X 5.64 MM**

GRADING RESULTS

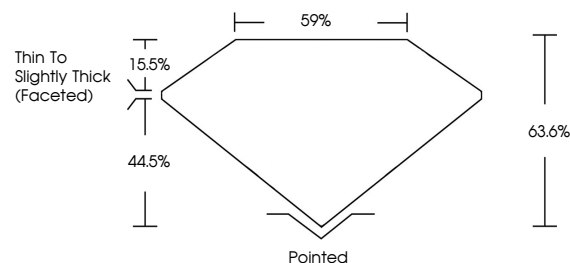
Carat Weight **3.07 CARATS**
Color Grade **F**
Clarity Grade **VVS 2**



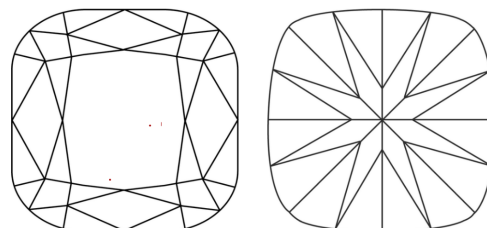
Sample Image Used



PROPORTIONS



CLARITY CHARACTERISTICS



KEY TO SYMBOLS

Red symbols indicate internal characteristics.
Green symbols indicate external characteristics.

COLOR

D E F G H I J Faint Very Light Light

CLARITY

FL	IF	VVS ¹⁻²	VS ¹⁻²	SI ¹⁻²	I ¹⁻³
Flawless	Internally Flawless	Very Very Slightly Included	Very Slightly Included	Slightly Included	Included

ADDITIONAL GRADING INFORMATION

Polish **EXCELLENT**
Symmetry **VERY GOOD**
Fluorescence **NONE**
Inscription(s) **(IGI) LG776643469**
Comments: This Laboratory Grown Diamond was created by Chemical Vapor Deposition (CVD) growth process. Type IIa



IGI



March 18, 2026
IGI Report No **LG776643469**
SQUARE CUSHION BRILLIANT
8.90 X 8.87 X 5.64 MM
Carat Weight **3.07 CARATS**
Color Grade **F**
Clarity Grade **VVS 2**
Depth **44.5%**
Table **15.5%**
Girdle **59%**
Thin To Slightly Thick (Faceted)
Culet **Pointed**
Polish **EXCELLENT**
Symmetry **VERY GOOD**
Fluorescence **NONE**
Inscription(s) **(IGI) LG776643469**

Comments: This Laboratory Grown Diamond was created by Chemical Vapor Deposition (CVD) growth process. Type IIa