



ELECTRONIC COPY

LG770649759
Report verification at igi.org



February 28, 2026
IGI Report Number **LG770649759**
Description **LABORATORY GROWN DIAMOND**
Shape and Cutting Style **SQUARE CUSHION MODIFIED BRILLIANT**
Measurements **8.25 X 7.93 X 5.27 MM**
GRADING RESULTS
Carat Weight **3.06 CARATS**
Color Grade **FANCY INTENSE YELLOW**
Clarity Grade **VS 2**

February 28, 2026
IGI Report Number **LG770649759**
Description **LABORATORY GROWN DIAMOND**
Shape and Cutting Style **SQUARE CUSHION MODIFIED BRILLIANT**
Measurements **8.25 X 7.93 X 5.27 MM**

GRADING RESULTS

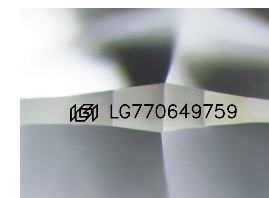
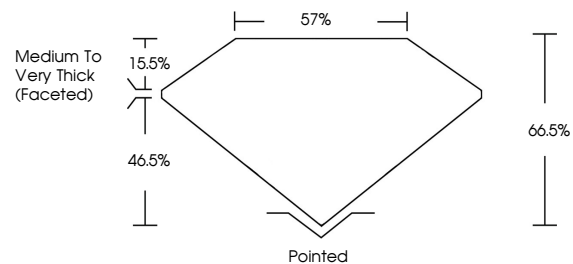
Carat Weight **3.06 CARATS**
Color Grade **FANCY INTENSE YELLOW**
Clarity Grade **VS 2**

ADDITIONAL GRADING INFORMATION

Polish **EXCELLENT**
Symmetry **EXCELLENT**
Fluorescence **NONE**
Inscription(s) **IGI LG770649759**

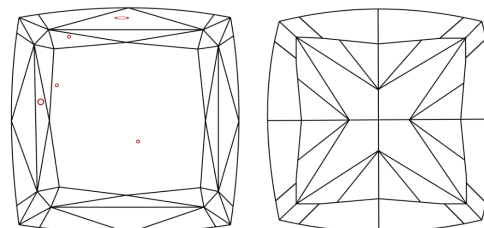
Comments: This Laboratory Grown Diamond was created by Chemical Vapor Deposition (CVD) growth process.

PROPORTIONS



Sample Image Used

CLARITY CHARACTERISTICS



KEY TO SYMBOLS

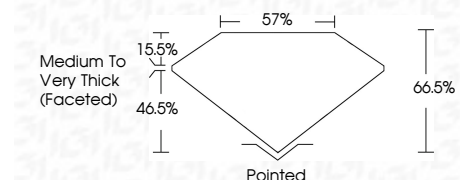
Red symbols indicate internal characteristics.
Green symbols indicate external characteristics.

COLOR

D E F G H I J Faint Very Light Light

CLARITY

FL	IF	VS ¹⁻²	VS ¹⁻²	SI ¹⁻²	I ¹⁻³
Flawless	Internally Flawless	Very Very Slightly Included	Very Slightly Included	Slightly Included	Included



ADDITIONAL GRADING INFORMATION

Polish **EXCELLENT**
Symmetry **EXCELLENT**
Fluorescence **NONE**
Inscription(s) **IGI LG770649759**
Comments: This Laboratory Grown Diamond was created by Chemical Vapor Deposition (CVD) growth process.



February 28, 2026
IGI Report No. **LG770649759**
SQUARE CUSHION MODIFIED BRILLIANT
8.25 X 7.93 X 5.27 MM
Carat Weight **3.06 CARATS**
Color Grade **FANCY INTENSE YELLOW**
Clarity Grade **VS 2**
Depth **66.5%**
Table **57%**
Girdle **Medium to Very Thick (Faceted)**
Culet **Pointed**
Polish **EXCELLENT**
Symmetry **EXCELLENT**
Fluorescence **NONE**
Inscription(s) **IGI LG770649759**

Comments: This Laboratory Grown Diamond was created by Chemical Vapor Deposition (CVD) growth process.