



**ELECTRONIC COPY**

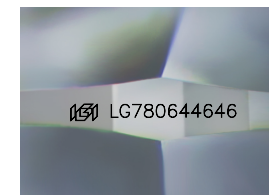
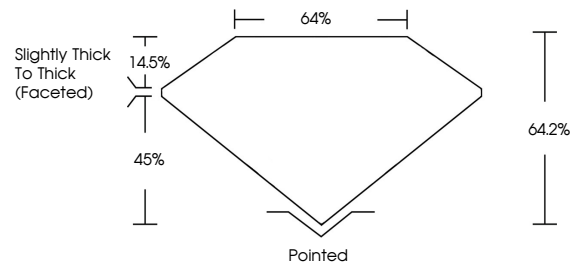
LG780644646  
Report verification at igi.org



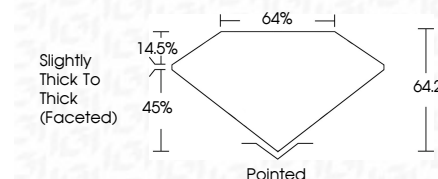
March 12, 2026  
IGI Report Number **LG780644646**  
Description **LABORATORY GROWN DIAMOND**  
Shape and Cutting Style **SQUARE CUSHION MODIFIED BRILLIANT**  
Measurements **8.07 X 8.04 X 5.16 MM**  
**GRADING RESULTS**  
Carat Weight **3.03 CARATS**  
Color Grade **FANCY LIGHT YELLOW**  
Clarity Grade **VVS 2**

March 12, 2026  
IGI Report Number **LG780644646**  
Description **LABORATORY GROWN DIAMOND**  
Shape and Cutting Style **SQUARE CUSHION MODIFIED BRILLIANT**  
Measurements **8.07 X 8.04 X 5.16 MM**  
**GRADING RESULTS**  
Carat Weight **3.03 CARATS**  
Color Grade **FANCY LIGHT YELLOW**  
Clarity Grade **VVS 2**

**PROPORTIONS**



Sample Image Used



**ADDITIONAL GRADING INFORMATION**

Polish **EXCELLENT**  
Symmetry **EXCELLENT**  
Fluorescence **NONE**  
Inscription(s) **IGI LG780644646**

Comments: This Laboratory Grown Diamond was created by Chemical Vapor Deposition (CVD) growth process.

**COLOR**

D E F G H I J Faint Very Light Light

**CLARITY**

FL	IF	VVS <sup>1-2</sup>	VS <sup>1-2</sup>	SI <sup>1-2</sup>	I <sup>1-3</sup>
Flawless	Internally Flawless	Very Very Slightly Included	Very Slightly Included	Slightly Included	Included

**ADDITIONAL GRADING INFORMATION**

Polish **EXCELLENT**  
Symmetry **EXCELLENT**  
Fluorescence **NONE**  
Inscription(s) **IGI LG780644646**  
Comments: This Laboratory Grown Diamond was created by Chemical Vapor Deposition (CVD) growth process.



March 12, 2026  
IGI Report No **LG780644646**  
**SQUARE CUSHION MODIFIED BRILLIANT**  
8.07 X 8.04 X 5.16 MM  
3.03 CARATS  
Carat Weight  
Color Grade **FANCY LIGHT YELLOW**  
Clarity Grade **VVS 2**  
Table **64.2%**  
Girdle **45%**  
Slightly Thick To Thick (Faceted)  
Culet **Pointed**  
Polish **EXCELLENT**  
Symmetry **EXCELLENT**  
Fluorescence **NONE**  
Inscription(s) **IGI LG780644646**  
Comments: This Laboratory Grown Diamond was created by Chemical Vapor Deposition (CVD) growth process.