



ELECTRONIC COPY

LG783646828
Report verification at igi.org



March 26, 2026
IGI Report Number **LG783646828**
Description **LABORATORY GROWN DIAMOND**
Shape and Cutting Style **CUSHION MODIFIED BRILLIANT**
Measurements **9.01 X 7.34 X 5.11 MM**
GRADING RESULTS
Carat Weight **3.16 CARATS**
Color Grade **FANCY LIGHT BLUE**
Clarity Grade **VVS 2**

March 26, 2026
IGI Report Number **LG783646828**
Description **LABORATORY GROWN DIAMOND**
Shape and Cutting Style **CUSHION MODIFIED BRILLIANT**
Measurements **9.01 X 7.34 X 5.11 MM**

GRADING RESULTS

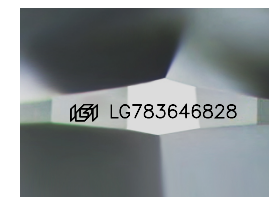
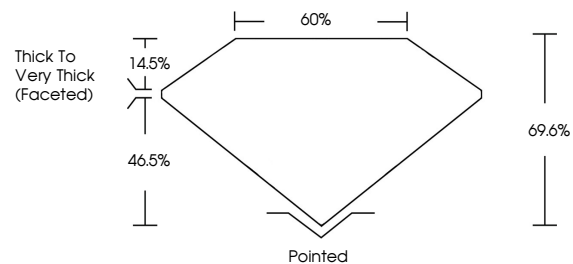
Carat Weight **3.16 CARATS**
Color Grade **FANCY LIGHT BLUE**
Clarity Grade **VVS 2**

ADDITIONAL GRADING INFORMATION

Polish **EXCELLENT**
Symmetry **EXCELLENT**
Fluorescence **NONE**
Inscription(s) **IGI LG783646828**

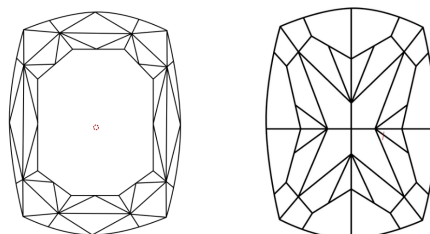
Comments: As Grown - No indication of post-growth treatment.
This Laboratory Grown Diamond was created by High Pressure High Temperature (HPHT) growth process.

PROPORTIONS



Sample Image Used

CLARITY CHARACTERISTICS



KEY TO SYMBOLS

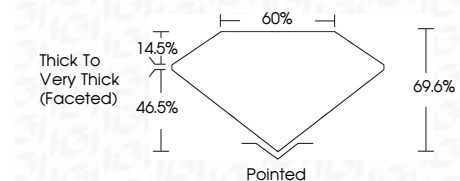
Red symbols indicate internal characteristics.
Green symbols indicate external characteristics.

COLOR

D E F G H I J Faint Very Light Light

CLARITY

FL	IF	VVS ¹⁻²	VS ¹⁻²	SI ¹⁻²	I ¹⁻³
Flawless	Internally Flawless	Very Very Slightly Included	Very Slightly Included	Slightly Included	Included



ADDITIONAL GRADING INFORMATION

Polish **EXCELLENT**
Symmetry **EXCELLENT**
Fluorescence **NONE**
Inscription(s) **IGI LG783646828**
Comments: As Grown - No indication of post-growth treatment.
This Laboratory Grown Diamond was created by High Pressure High Temperature (HPHT) growth process.



IGI



March 26, 2026
IGI Report No LG783646828
CUSHION MODIFIED BRILLIANT
3.16 CARATS
FANCY LIGHT BLUE
VVS 2
69.6%
46.5%
Thick to Very Thick (Faceted)
Pointed
EXCELLENT
EXCELLENT
NONE
IGI LG783646828

Comments: As Grown - No indication of post-growth treatment.
This Laboratory Grown Diamond was created by High Pressure High Temperature (HPHT) growth process.