



**ELECTRONIC COPY**

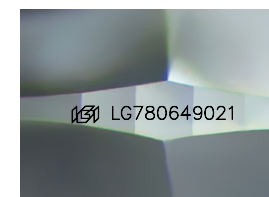
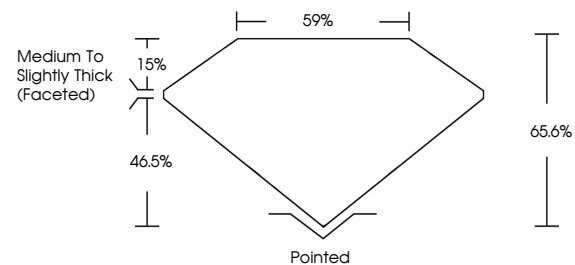
LG780649021  
Report verification at igi.org



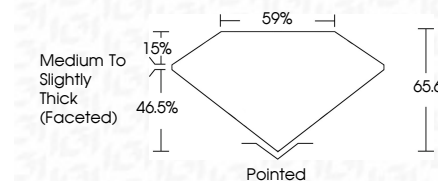
March 9, 2026  
IGI Report Number **LG780649021**  
Description **LABORATORY GROWN DIAMOND**  
Shape and Cutting Style **CUSHION MODIFIED BRILLIANT**  
Measurements **10.17 X 7.68 X 5.04 MM**  
**GRADING RESULTS**  
Carat Weight **3.05 CARATS**  
Color Grade **D**  
Clarity Grade **VVS 2**

March 9, 2026  
IGI Report Number **LG780649021**  
Description **LABORATORY GROWN DIAMOND**  
Shape and Cutting Style **CUSHION MODIFIED BRILLIANT**  
Measurements **10.17 X 7.68 X 5.04 MM**  
**GRADING RESULTS**  
Carat Weight **3.05 CARATS**  
Color Grade **D**  
Clarity Grade **VVS 2**

**PROPORTIONS**



Sample Image Used



**ADDITIONAL GRADING INFORMATION**

Polish **EXCELLENT**  
Symmetry **EXCELLENT**  
Fluorescence **NONE**  
Inscription(s) **IGI LG780649021**

Comments: This Laboratory Grown Diamond was created by Chemical Vapor Deposition (CVD) growth process. Type IIa

**ADDITIONAL GRADING INFORMATION**

Polish **EXCELLENT**  
Symmetry **EXCELLENT**  
Fluorescence **NONE**  
Inscription(s) **IGI LG780649021**  
Comments: This Laboratory Grown Diamond was created by Chemical Vapor Deposition (CVD) growth process. Type IIa

**COLOR**

D E F G H I J Faint Very Light Light

**CLARITY**

FL	IF	VVS <sup>1-2</sup>	VS <sup>1-2</sup>	SI <sup>1-2</sup>	I <sup>1-3</sup>
Flawless	Internally Flawless	Very Very Slightly Included	Very Slightly Included	Slightly Included	Included



**IGI**



March 9, 2026  
IGI Report No **LG780649021**  
**CUSHION MODIFIED BRILLIANT**  
**10.17 X 7.68 X 5.04 MM**  
Carat Weight **3.05 CARATS**  
Color Grade **D**  
Clarity Grade **VVS 2**  
Table **59%**  
Depth **46.5%**  
Girdle **Medium to Slightly Thick (Faceted)**  
Culet **Pointed**  
Polish **EXCELLENT**  
Symmetry **EXCELLENT**  
Fluorescence **NONE**  
Inscription(s) **IGI LG780649021**  
Comments: This Laboratory Grown Diamond was created by Chemical Vapor Deposition (CVD) growth process. Type IIa