



ELECTRONIC COPY

LG78268891
Report verification at igi.org



March 14, 2026

IGI Report Number **LG78268891**

Description **LABORATORY GROWN DIAMOND**

Shape and Cutting Style **CUSHION MODIFIED BRILLIANT**

Measurements **9.27 X 7.38 X 4.97 MM**

GRADING RESULTS

Carat Weight **2.72 CARATS**

Color Grade **D**

Clarity Grade **VVS 1**

Cut Grade **EXCELLENT**

LABORATORY GROWN DIAMOND REPORT

March 14, 2026

IGI Report Number **LG78268891**

Description **LABORATORY GROWN DIAMOND**

Shape and Cutting Style **CUSHION MODIFIED BRILLIANT**

Measurements **9.27 X 7.38 X 4.97 MM**

GRADING RESULTS

Carat Weight **2.72 CARATS**

Color Grade **D**

Clarity Grade **VVS 1**

Cut Grade **EXCELLENT**

ADDITIONAL GRADING INFORMATION

Polish **EXCELLENT**

Symmetry **EXCELLENT**

Fluorescence **NONE**

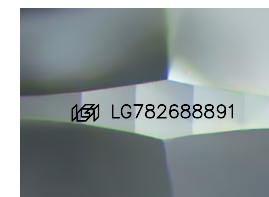
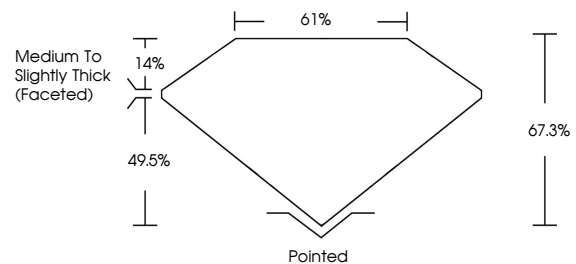
Inscription(s) **LG78268891**

Comments: As Grown - No indication of post-growth treatment.

This Laboratory Grown Diamond was created by High Pressure High Temperature (HPHT) growth process.

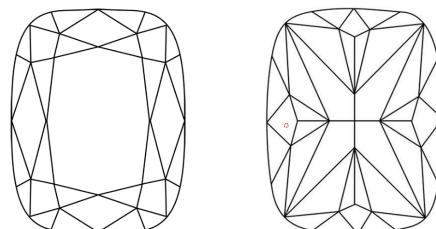
Type II

PROPORTIONS



Sample Image Used

CLARITY CHARACTERISTICS



KEY TO SYMBOLS

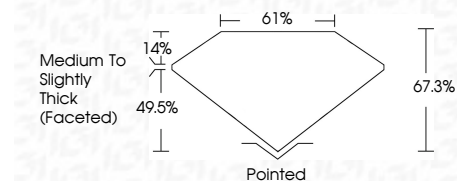
Red symbols indicate internal characteristics.
Green symbols indicate external characteristics.

COLOR

D E F G H I J Faint Very Light Light

CLARITY

FL	IF	VVS ¹⁻²	VS ¹⁻²	SI ¹⁻²	I ¹⁻³
Flawless	Internally Flawless	Very Very Slightly Included	Very Slightly Included	Slightly Included	Included



ADDITIONAL GRADING INFORMATION

Polish **EXCELLENT**

Symmetry **EXCELLENT**

Fluorescence **NONE**

Inscription(s) **LG78268891**

Comments: As Grown - No indication of post-growth treatment.

This Laboratory Grown Diamond was created by High Pressure High Temperature (HPHT) growth process.

Type II



IGI



March 14, 2026
IGI Report No LG78268891
CUSHION MODIFIED BRILLIANT

9.27 X 7.38 X 4.97 MM

2.72 CARATS
D
EXCELLENT
67.3%
61%
Medium To Slightly Thick (Faceted)

Pointed
EXCELLENT
EXCELLENT
NONE
IGI LG78268891

Cutler
Polish
Symmetry
Fluorescence
Inscriptions(s)

Comments:
As Grown - No indication of post-growth treatment.
This Laboratory Grown Diamond was created by High Pressure High Temperature (HPHT) growth process.
Type II