



ELECTRONIC COPY

LG772667775
Report verification at igi.org



March 10, 2026

IGI Report Number **LG772667775**

Description **LABORATORY GROWN DIAMOND**

Shape and Cutting Style **ROUND BRILLIANT**

Measurements **7.99 - 8.03 X 4.98 MM**

GRADING RESULTS

Carat Weight **2.00 CARATS**

Color Grade **FANCY VIVID BLUE**

Clarity Grade **VVS 2**

Cut Grade **IDEAL**

March 10, 2026

IGI Report Number **LG772667775**

Description **LABORATORY GROWN DIAMOND**

Shape and Cutting Style **ROUND BRILLIANT**

Measurements **7.99 - 8.03 X 4.98 MM**

GRADING RESULTS

Carat Weight **2.00 CARATS**

Color Grade **FANCY VIVID BLUE**

Clarity Grade **VVS 2**

Cut Grade **IDEAL**

ADDITIONAL GRADING INFORMATION

Polish **EXCELLENT**

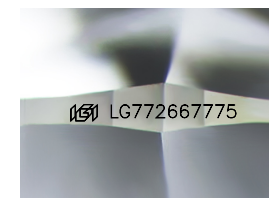
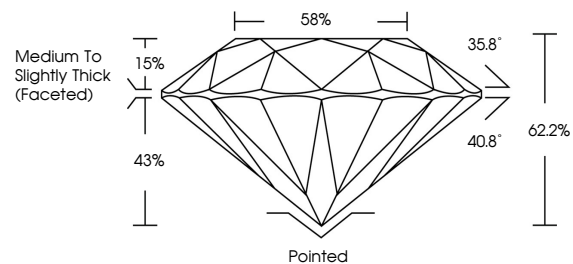
Symmetry **EXCELLENT**

Fluorescence **NONE**

Inscription(s) **IGI LG772667775**

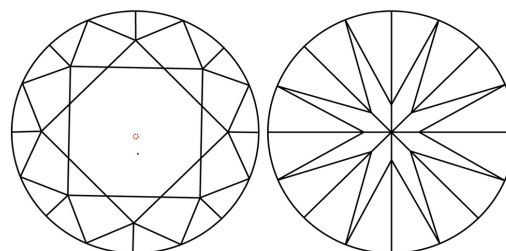
Comments: This Laboratory Grown Diamond was created by High Pressure High Temperature (HPHT) growth process. Indications of post-growth treatment.

PROPORTIONS



Sample Image Used

CLARITY CHARACTERISTICS



KEY TO SYMBOLS

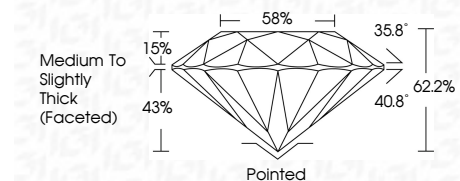
Red symbols indicate internal characteristics.
Green symbols indicate external characteristics.

COLOR

D E F G H I J Faint Very Light Light

CLARITY

FL	IF	VS ¹⁻²	VS ¹⁻²	SI ¹⁻²	I ¹⁻³
Flawless	Internally Flawless	Very Very Slightly Included	Very Slightly Included	Slightly Included	Included



ADDITIONAL GRADING INFORMATION

Polish **EXCELLENT**

Symmetry **EXCELLENT**

Fluorescence **NONE**

Inscription(s) **IGI LG772667775**

Comments: This Laboratory Grown Diamond was created by High Pressure High Temperature (HPHT) growth process. Indications of post-growth treatment.



IGI



March 10, 2026
IGI Report No LG772667775
ROUND BRILLIANT

2.00 CARATS
Carat Weight
FANCY VIVID BLUE
Color Grade
VVS 2
Clarity Grade
IDEAL
Cut Grade
62.2%
Depth
88%
Medium To Slightly Thick (Faceted)
Grade

Pointed
EXCELLENT
EXCELLENT
NONE
NONE
IGI LG772667775
Inscription(s)

Comments: This Laboratory Grown Diamond was created by High Pressure High Temperature (HPHT) growth process. Indications of post-growth treatment.