



ELECTRONIC COPY

LG780699541
Report verification at igi.org



March 14, 2026
IGI Report Number **LG780699541**
Description **LABORATORY GROWN DIAMOND**
Shape and Cutting Style **SQUARE CUSHION MODIFIED BRILLIANT**
Measurements **8.40 X 8.13 X 5.08 MM**
GRADING RESULTS
Carat Weight **3.08 CARATS**
Color Grade **FANCY VIVID GREEN**
Clarity Grade **VS 2**

LABORATORY GROWN DIAMOND REPORT

March 14, 2026
IGI Report Number **LG780699541**
Description **LABORATORY GROWN DIAMOND**
Shape and Cutting Style **SQUARE CUSHION MODIFIED BRILLIANT**
Measurements **8.40 X 8.13 X 5.08 MM**

GRADING RESULTS

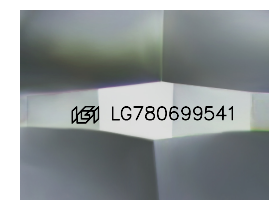
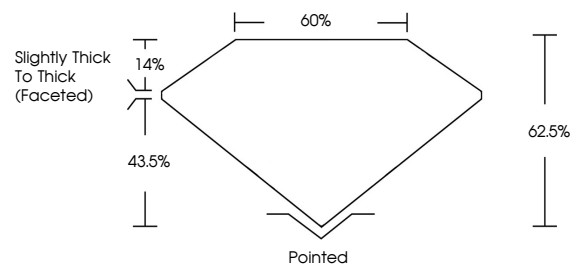
Carat Weight **3.08 CARATS**
Color Grade **FANCY VIVID GREEN**
Clarity Grade **VS 2**

ADDITIONAL GRADING INFORMATION

Polish **EXCELLENT**
Symmetry **EXCELLENT**
Fluorescence **NONE**
Inscription(s) **IGI LG780699541**

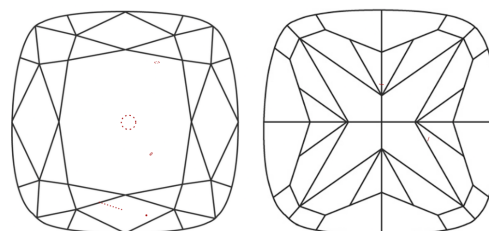
Comments: This Laboratory Grown Diamond was created by Chemical Vapor Deposition (CVD) growth process.
Indications of post-growth treatment.

PROPORTIONS



Sample Image Used

CLARITY CHARACTERISTICS



KEY TO SYMBOLS

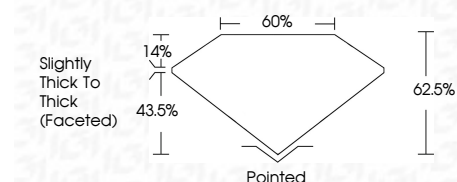
Red symbols indicate internal characteristics.
Green symbols indicate external characteristics.

COLOR

D E F G H I J Faint Very Light Light

CLARITY

FL	IF	VS ¹⁻²	VS ¹⁻²	SI ¹⁻²	I ¹⁻³
Flawless	Internally Flawless	Very Very Slightly Included	Very Slightly Included	Slightly Included	Included



ADDITIONAL GRADING INFORMATION

Polish **EXCELLENT**
Symmetry **EXCELLENT**
Fluorescence **NONE**
Inscription(s) **IGI LG780699541**
Comments: This Laboratory Grown Diamond was created by Chemical Vapor Deposition (CVD) growth process.
Indications of post-growth treatment.



March 14, 2026
IGI Report No **LG780699541**
SQUARE CUSHION MODIFIED BRILLIANT
8.40 X 8.13 X 5.08 MM
Carat Weight **3.08 CARATS**
Color Grade **FANCY VIVID GREEN**
Clarity Grade **VS 2**
Table **60%**
Depth **43.5%**
Girdle **Slightly Thick To Thick (Faceted)**
Culet **Pointed**
Polish **EXCELLENT**
Symmetry **EXCELLENT**
Fluorescence **NONE**
Inscription(s) **IGI LG780699541**
Comments: This Laboratory Grown Diamond was created by Chemical Vapor Deposition (CVD) growth process.
Indications of post-growth treatment.