



**ELECTRONIC COPY**

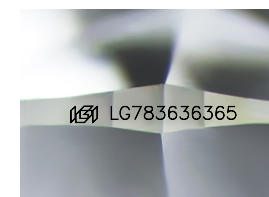
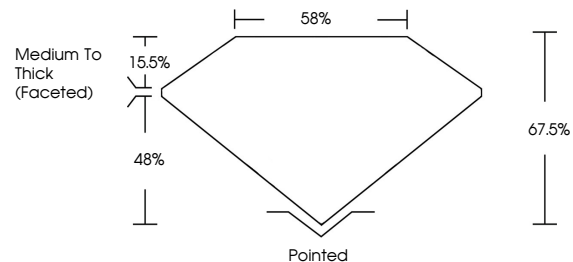
LG783636365  
Report verification at igi.org



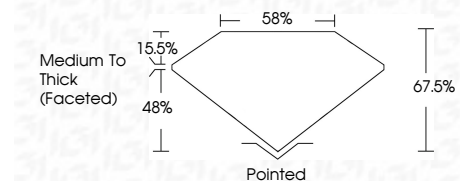
March 16, 2026  
IGI Report Number **LG783636365**  
Description **LABORATORY GROWN DIAMOND**  
Shape and Cutting Style **CUSHION MODIFIED BRILLIANT**  
Measurements **10.10 X 7.75 X 5.23 MM**  
**GRADING RESULTS**  
Carat Weight **3.22 CARATS**  
Color Grade **D**  
Clarity Grade **VVS 2**

March 16, 2026  
IGI Report Number **LG783636365**  
Description **LABORATORY GROWN DIAMOND**  
Shape and Cutting Style **CUSHION MODIFIED BRILLIANT**  
Measurements **10.10 X 7.75 X 5.23 MM**  
**GRADING RESULTS**  
Carat Weight **3.22 CARATS**  
Color Grade **D**  
Clarity Grade **VVS 2**

**PROPORTIONS**



Sample Image Used



**ADDITIONAL GRADING INFORMATION**

Polish **EXCELLENT**  
Symmetry **EXCELLENT**  
Fluorescence **NONE**  
Inscription(s) **IGI LG783636365**

Comments: This Laboratory Grown Diamond was created by Chemical Vapor Deposition (CVD) growth process.  
Type IIa

**ADDITIONAL GRADING INFORMATION**

Polish **EXCELLENT**  
Symmetry **EXCELLENT**  
Fluorescence **NONE**  
Inscription(s) **IGI LG783636365**  
Comments: This Laboratory Grown Diamond was created by Chemical Vapor Deposition (CVD) growth process.  
Type IIa

**COLOR**

D E F G H I J Faint Very Light Light

**CLARITY**

FL	IF	VVS <sup>1-2</sup>	VS <sup>1-2</sup>	SI <sup>1-2</sup>	I <sup>1-3</sup>
Flawless	Internally Flawless	Very Very Slightly Included	Very Slightly Included	Slightly Included	Included



**IGI**



March 16, 2026  
IGI Report No **LG783636365**  
**CUSHION MODIFIED BRILLIANT**  
**10.10 X 7.75 X 5.23 MM**  
Carat Weight **3.22 CARATS**  
Color Grade **D**  
Clarity Grade **VVS 2**  
Depth **67.5%**  
Table **58%**  
Girdle **Medium To Thick (Faceted)**  
Culet **Pointed**  
Polish **EXCELLENT**  
Symmetry **EXCELLENT**  
Fluorescence **NONE**  
Inscription(s) **IGI LG783636365**  
Comments: This Laboratory Grown Diamond was created by Chemical Vapor Deposition (CVD) growth process.  
Type IIa