



ELECTRONIC COPY

LG778615742
Report verification at igi.org



March 9, 2026
IGI Report Number LG778615742
Description LABORATORY GROWN DIAMOND
Shape and Cutting Style SQUARE CUSHION MODIFIED BRILLIANT
Measurements 8.04 X 8.02 X 5.21 MM
GRADING RESULTS
Carat Weight 3.09 CARATS
Color Grade FANCY VIVID PINK
Clarity Grade VVS 2

March 9, 2026
IGI Report Number LG778615742
Description LABORATORY GROWN DIAMOND
Shape and Cutting Style SQUARE CUSHION MODIFIED BRILLIANT
Measurements 8.04 X 8.02 X 5.21 MM

GRADING RESULTS

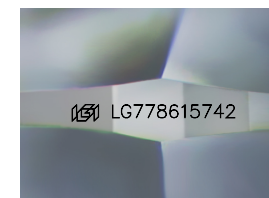
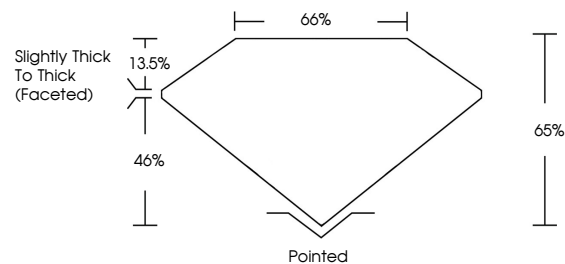
Carat Weight 3.09 CARATS
Color Grade FANCY VIVID PINK
Clarity Grade VVS 2

ADDITIONAL GRADING INFORMATION

Polish EXCELLENT
Symmetry EXCELLENT
Fluorescence STRONG
Inscription(s) LG778615742

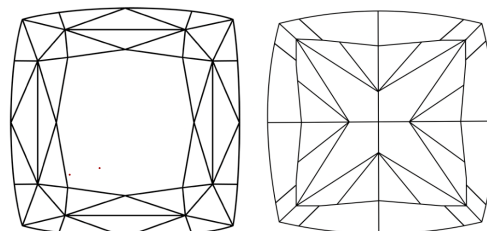
Comments: This Laboratory Grown Diamond was created by Chemical Vapor Deposition (CVD) growth process.
Indications of post-growth treatment.

PROPORTIONS



Sample Image Used

CLARITY CHARACTERISTICS



KEY TO SYMBOLS

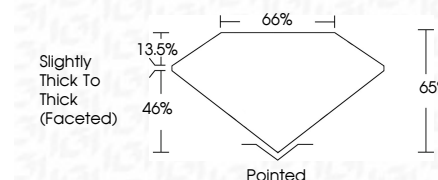
Red symbols indicate internal characteristics.
Green symbols indicate external characteristics.

COLOR

D E F G H I J Faint Very Light Light

CLARITY

FL IF VVS 1-2 VS 1-2 SI 1-2 I 1-3
Flawless Internally Flawless Very Very Slightly Included Very Slightly Included Slightly Included Included



ADDITIONAL GRADING INFORMATION

Polish EXCELLENT
Symmetry EXCELLENT
Fluorescence STRONG
Inscription(s) LG778615742
Comments: This Laboratory Grown Diamond was created by Chemical Vapor Deposition (CVD) growth process.
Indications of post-growth treatment.



March 9, 2026
IGI Report No LG778615742
SQUARE CUSHION MODIFIED BRILLIANT
8.04 X 8.02 X 5.21 MM
3.09 CARATS
FANCY VIVID PINK
VVS 2
8.04 X 8.02 X 5.21 MM
Slightly Thick To Thick (Faceted)
Pointed
EXCELLENT
EXCELLENT
STRONG
LG778615742
Comments: This Laboratory Grown Diamond was created by Chemical Vapor Deposition (CVD) growth process.
Indications of post-growth treatment.