



**ELECTRONIC COPY**

LG778631622  
Report verification at [igi.org](http://igi.org)



February 27, 2026  
IGI Report Number **LG778631622**  
Description **LABORATORY GROWN DIAMOND**  
Shape and Cutting Style **CUSHION MODIFIED BRILLIANT**  
Measurements **11.19 X 7.63 X 4.94 MM**  
**GRADING RESULTS**  
Carat Weight **4.02 CARATS**  
Color Grade **FANCY VIVID GREEN**  
Clarity Grade **VVS 2**

February 27, 2026  
IGI Report Number **LG778631622**  
Description **LABORATORY GROWN DIAMOND**  
Shape and Cutting Style **CUSHION MODIFIED BRILLIANT**  
Measurements **11.19 X 7.63 X 4.94 MM**

**GRADING RESULTS**

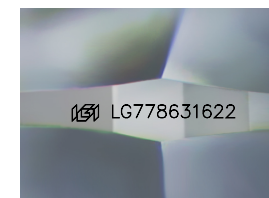
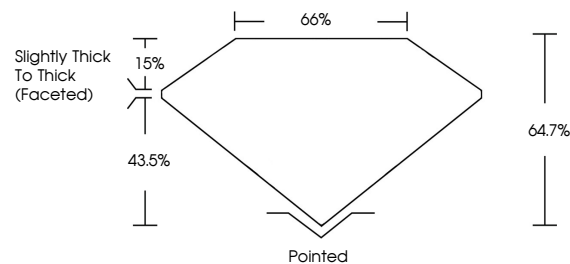
Carat Weight **4.02 CARATS**  
Color Grade **FANCY VIVID GREEN**  
Clarity Grade **VVS 2**

**ADDITIONAL GRADING INFORMATION**

Polish **EXCELLENT**  
Symmetry **EXCELLENT**  
Fluorescence **NONE**  
Inscription(s) **IGI LG778631622**

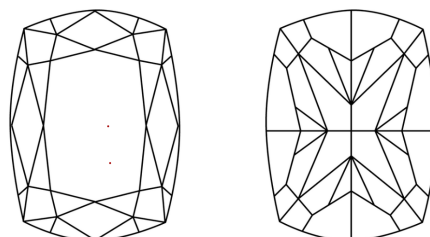
Comments: This Laboratory Grown Diamond was created by Chemical Vapor Deposition (CVD) growth process.  
Indications of post-growth treatment.

**PROPORTIONS**



Sample Image Used

**CLARITY CHARACTERISTICS**



**KEY TO SYMBOLS**

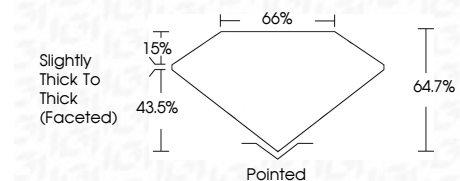
Red symbols indicate internal characteristics.  
Green symbols indicate external characteristics.

**COLOR**

D E F G H I J Faint Very Light Light

**CLARITY**

FL	IF	VVS <sup>1-2</sup>	VS <sup>1-2</sup>	SI <sup>1-2</sup>	I <sup>1-3</sup>
Flawless	Internally Flawless	Very Very Slightly Included	Very Slightly Included	Slightly Included	Included



**ADDITIONAL GRADING INFORMATION**

Polish **EXCELLENT**  
Symmetry **EXCELLENT**  
Fluorescence **NONE**  
Inscription(s) **IGI LG778631622**  
Comments: This Laboratory Grown Diamond was created by Chemical Vapor Deposition (CVD) growth process.  
Indications of post-growth treatment.



February 27, 2026  
IGI Report No LG778631622  
**CUSHION MODIFIED BRILLIANT**  
11.19 X 7.63 X 4.94 MM  
4.02 CARATS  
FANCY VIVID GREEN  
VVS 2  
64.7%  
65%  
Slightly Thick to Thick (Faceted)  
Pointed  
EXCELLENT  
EXCELLENT  
NONE  
IGI LG778631622  
Comments: This Laboratory Grown Diamond was created by Chemical Vapor Deposition (CVD) growth process.  
Indications of post-growth treatment.