



ELECTRONIC COPY

LG76660628
Report verification at igi.org



January 26, 2026
IGI Report Number **LG76660628**
Description **LABORATORY GROWN DIAMOND**
Shape and Cutting Style **SQUARE CUSHION MODIFIED BRILLIANT**
Measurements **8.33 X 7.98 X 5.40 MM**
GRADING RESULTS
Carat Weight **3.04 CARATS**
Color Grade **FANCY VIVID PINK**
Clarity Grade **SI 1**

LABORATORY GROWN DIAMOND REPORT

January 26, 2026
IGI Report Number **LG76660628**
Description **LABORATORY GROWN DIAMOND**
Shape and Cutting Style **SQUARE CUSHION MODIFIED BRILLIANT**
Measurements **8.33 X 7.98 X 5.40 MM**

GRADING RESULTS

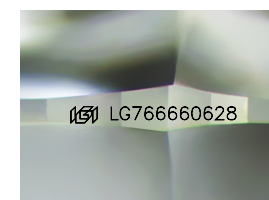
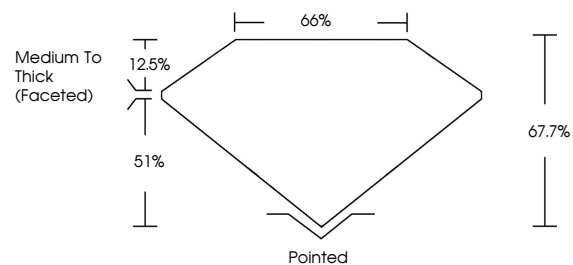
Carat Weight **3.04 CARATS**
Color Grade **FANCY VIVID PINK**
Clarity Grade **SI 1**

ADDITIONAL GRADING INFORMATION

Polish **EXCELLENT**
Symmetry **EXCELLENT**
Fluorescence **SLIGHT**
Inscription(s) **IGI LG76660628**

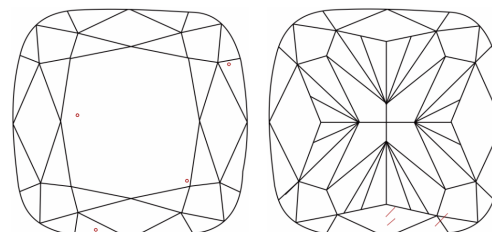
Comments: This Laboratory Grown Diamond was created by Chemical Vapor Deposition (CVD) growth process. Indications of post-growth treatment.

PROPORTIONS



Sample Image Used

CLARITY CHARACTERISTICS



KEY TO SYMBOLS

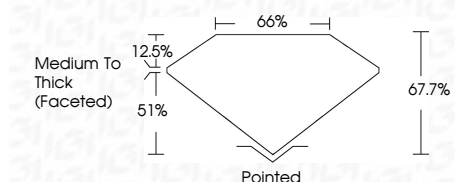
Red symbols indicate internal characteristics.
Green symbols indicate external characteristics.

COLOR

D E F G H I J Faint Very Light Light

CLARITY

FL	IF	VS ¹⁻²	VS ¹⁻²	SI ¹⁻²	I ¹⁻³
Flawless	Internally Flawless	Very Very Slightly Included	Very Slightly Included	Slightly Included	Included



ADDITIONAL GRADING INFORMATION

Polish **EXCELLENT**
Symmetry **EXCELLENT**
Fluorescence **SLIGHT**
Inscription(s) **IGI LG76660628**
Comments: This Laboratory Grown Diamond was created by Chemical Vapor Deposition (CVD) growth process. Indications of post-growth treatment.



January 26, 2026
IGI Report No **LG76660628**
SQUARE CUSHION MODIFIED BRILLIANT
8.33 X 7.98 X 5.40 MM
Carat Weight **3.04 CARATS**
Color Grade **FANCY VIVID PINK**
Clarity Grade **SI 1**
Table **66%**
Depth **67.7%**
Girdle **Medium To Thick (Faceted)**
Culet **Pointed**
Polish **EXCELLENT**
Symmetry **EXCELLENT**
Fluorescence **SLIGHT**
Inscription(s) **IGI LG76660628**
Comments: This Laboratory Grown Diamond was created by Chemical Vapor Deposition (CVD) growth process. Indications of post-growth treatment.