



ELECTRONIC COPY

LG773619050
Report verification at igi.org



February 14, 2026
IGI Report Number **LG773619050**
Description **LABORATORY GROWN DIAMOND**
Shape and Cutting Style **SQUARE CUSHION MODIFIED BRILLIANT**
Measurements **8.02 X 7.75 X 5.27 MM**
GRADING RESULTS
Carat Weight **3.10 CARATS**
Color Grade **FANCY INTENSE GREEN**
Clarity Grade **VVS 2**

February 14, 2026
IGI Report Number **LG773619050**
Description **LABORATORY GROWN DIAMOND**
Shape and Cutting Style **SQUARE CUSHION MODIFIED BRILLIANT**
Measurements **8.02 X 7.75 X 5.27 MM**

GRADING RESULTS

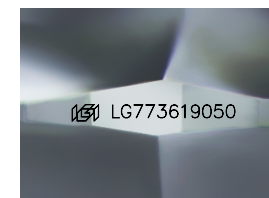
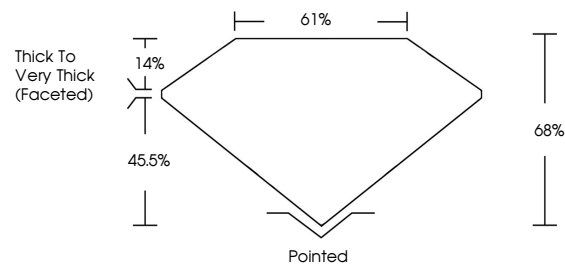
Carat Weight **3.10 CARATS**
Color Grade **FANCY INTENSE GREEN**
Clarity Grade **VVS 2**

ADDITIONAL GRADING INFORMATION

Polish **EXCELLENT**
Symmetry **EXCELLENT**
Fluorescence **VERY SLIGHT**
Inscription(s) **IGI LG773619050**

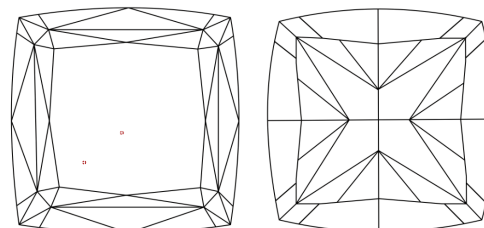
Comments: This Laboratory Grown Diamond was created by Chemical Vapor Deposition (CVD) growth process.
Indications of post-growth treatment.

PROPORTIONS



Sample Image Used

CLARITY CHARACTERISTICS



KEY TO SYMBOLS

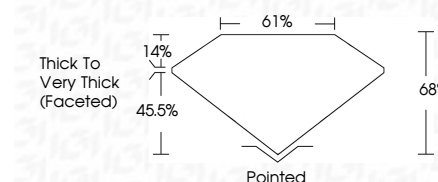
Red symbols indicate internal characteristics.
Green symbols indicate external characteristics.

COLOR

D E F G H I J Faint Very Light Light

CLARITY

FL	IF	VVS ¹⁻²	VS ¹⁻²	SI ¹⁻²	I ¹⁻³
Flawless	Internally Flawless	Very Very Slightly Included	Very Slightly Included	Slightly Included	Included



ADDITIONAL GRADING INFORMATION

Polish **EXCELLENT**
Symmetry **EXCELLENT**
Fluorescence **VERY SLIGHT**
Inscription(s) **IGI LG773619050**
Comments: This Laboratory Grown Diamond was created by Chemical Vapor Deposition (CVD) growth process.
Indications of post-growth treatment.



February 14, 2026
IGI Report No LG773619050
SQUARE CUSHION MODIFIED BRILLIANT
8.02 X 7.75 X 5.27 MM
3.10 CARATS
FANCY INTENSE GREEN
VVS 2
68%
61%
Thick to Very Thick (Faceted)
Pointed
EXCELLENT
EXCELLENT
VERY SLIGHT
IGI LG773619050
Comments: This Laboratory Grown Diamond was created by Chemical Vapor Deposition (CVD) growth process.
Indications of post-growth treatment.