



ELECTRONIC COPY

LG770651559
Report verification at igi.org



February 6, 2026
IGI Report Number **LG770651559**
Description **LABORATORY GROWN DIAMOND**
Shape and Cutting Style **CUSHION MODIFIED BRILLIANT**
Measurements **9.68 X 7.18 X 5.04 MM**
GRADING RESULTS
Carat Weight **3.32 CARATS**
Color Grade **FANCY INTENSE PINK**
Clarity Grade **VS 2**

LABORATORY GROWN DIAMOND REPORT

February 6, 2026
IGI Report Number **LG770651559**
Description **LABORATORY GROWN DIAMOND**
Shape and Cutting Style **CUSHION MODIFIED BRILLIANT**
Measurements **9.68 X 7.18 X 5.04 MM**

GRADING RESULTS

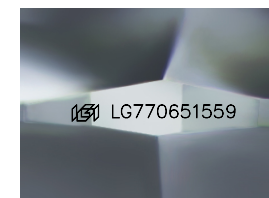
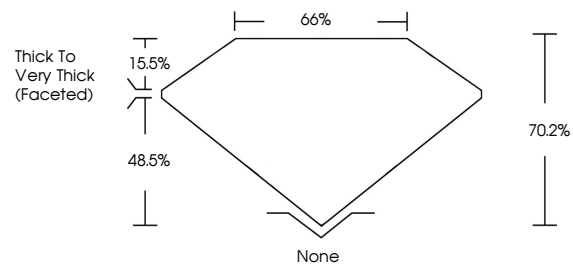
Carat Weight **3.32 CARATS**
Color Grade **FANCY INTENSE PINK**
Clarity Grade **VS 2**

ADDITIONAL GRADING INFORMATION

Polish **VERY GOOD**
Symmetry **GOOD**
Fluorescence **STRONG**
Inscription(s) **IGI LG770651559**

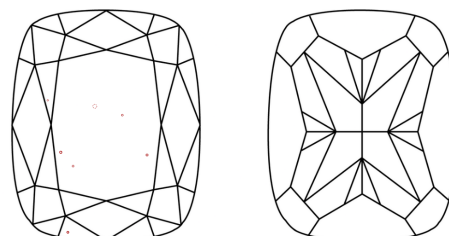
Comments: This Laboratory Grown Diamond was created by Chemical Vapor Deposition (CVD) growth process.
Indications of post-growth treatment.

PROPORTIONS



Sample Image Used

CLARITY CHARACTERISTICS



KEY TO SYMBOLS

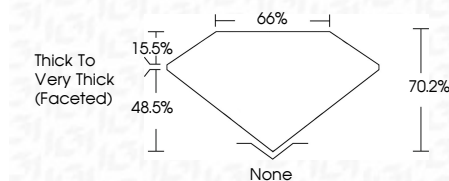
Red symbols indicate internal characteristics.
Green symbols indicate external characteristics.

COLOR

D E F G H I J Faint Very Light Light

CLARITY

FL	IF	VS ¹⁻²	VS ¹⁻²	SI ¹⁻²	I ¹⁻³
Flawless	Internally Flawless	Very Very Slightly Included	Very Slightly Included	Slightly Included	Included



ADDITIONAL GRADING INFORMATION

Polish **VERY GOOD**
Symmetry **GOOD**
Fluorescence **STRONG**
Inscription(s) **IGI LG770651559**
Comments: This Laboratory Grown Diamond was created by Chemical Vapor Deposition (CVD) growth process.
Indications of post-growth treatment.



February 6, 2026
IGI Report No LG770651559
CUSHION MODIFIED BRILLIANT

9.68 X 7.18 X 5.04 MM
3.32 CARATS
FANCY INTENSE PINK
VS 2
70.2%
66%
Thick to Very Thick (Faceted)
None
VERY GOOD
GOOD
STRONG
IGI LG770651559

Comments: This Laboratory Grown Diamond was created by Chemical Vapor Deposition (CVD) growth process.
Indications of post-growth treatment.