



**ELECTRONIC COPY**

LG759525058  
Report verification at igi.org



January 12, 2026  
IGI Report Number **LG759525058**  
Description **LABORATORY GROWN DIAMOND**  
Shape and Cutting Style **CUSHION MODIFIED BRILLIANT**  
Measurements **10.24 X 7.38 X 4.75 MM**  
**GRADING RESULTS**  
Carat Weight **3.10 CARATS**  
Color Grade **LIGHT YELLOW**  
Clarity Grade **VS 1**

**LABORATORY GROWN DIAMOND REPORT**

January 12, 2026  
IGI Report Number **LG759525058**  
Description **LABORATORY GROWN DIAMOND**  
Shape and Cutting Style **CUSHION MODIFIED BRILLIANT**  
Measurements **10.24 X 7.38 X 4.75 MM**

**GRADING RESULTS**

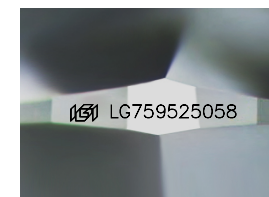
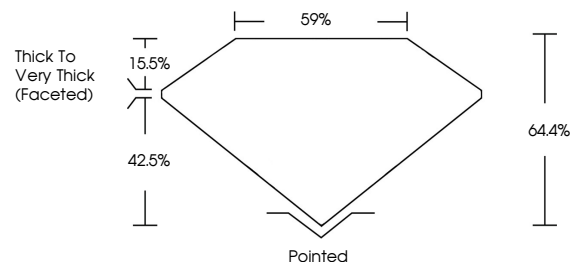
Carat Weight **3.10 CARATS**  
Color Grade **LIGHT YELLOW**  
Clarity Grade **VS 1**

**ADDITIONAL GRADING INFORMATION**

Polish **EXCELLENT**  
Symmetry **VERY GOOD**  
Fluorescence **NONE**  
Inscription(s) **IGI LG759525058**

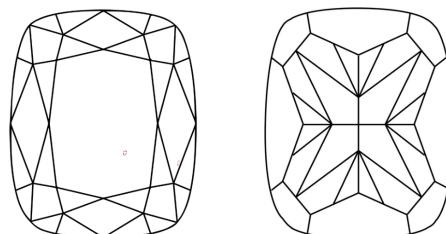
Comments: This Laboratory Grown Diamond was created by Chemical Vapor Deposition (CVD) growth process.  
Type IIa

**PROPORTIONS**



Sample Image Used

**CLARITY CHARACTERISTICS**



**KEY TO SYMBOLS**

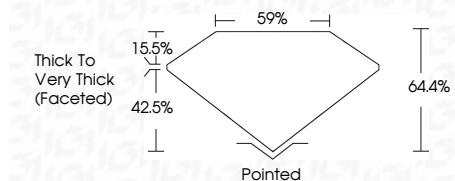
Red symbols indicate internal characteristics.  
Green symbols indicate external characteristics.

**COLOR**

D E F G H I J Faint Very Light Light

**CLARITY**

FL	IF	VS <sup>1-2</sup>	VS <sup>1-2</sup>	SI <sup>1-2</sup>	I <sup>1-3</sup>
Flawless	Internally Flawless	Very Very Slightly Included	Very Slightly Included	Slightly Included	Included



**ADDITIONAL GRADING INFORMATION**

Polish **EXCELLENT**  
Symmetry **VERY GOOD**  
Fluorescence **NONE**  
Inscription(s) **IGI LG759525058**  
Comments: This Laboratory Grown Diamond was created by Chemical Vapor Deposition (CVD) growth process.  
Type IIa



January 12, 2026  
IGI Report No LG759525058  
**CUSHION MODIFIED BRILLIANT**  
10.24 X 7.38 X 4.75 MM  
3.10 CARATS  
LIGHT YELLOW  
Color Grade  
Clarity Grade VS 1  
Table 59%  
Depth 64.4%  
Girdle Thick to Very Thick (Faceted)  
Culet Pointed  
Polish EXCELLENT  
Symmetry VERY GOOD  
Fluorescence NONE  
Inscription(s) IGI LG759525058  
Comments: This Laboratory Grown Diamond was created by Chemical Vapor Deposition (CVD) growth process.  
Type IIa