



ELECTRONIC COPY

LG764628901
Report verification at igi.org



January 20, 2026

IGI Report Number **LG764628901**

Description **LABORATORY GROWN DIAMOND**

Shape and Cutting Style **ROUND BRILLIANT**

Measurements **8.10 - 8.13 X 4.86 MM**

GRADING RESULTS

Carat Weight **2.00 CARATS**

Color Grade **FANCY VIVID GREEN**

Clarity Grade **VS 1**

Cut Grade **EXCELLENT**

January 20, 2026

IGI Report Number **LG764628901**

Description **LABORATORY GROWN DIAMOND**

Shape and Cutting Style **ROUND BRILLIANT**

Measurements **8.10 - 8.13 X 4.86 MM**

GRADING RESULTS

Carat Weight **2.00 CARATS**

Color Grade **FANCY VIVID GREEN**

Clarity Grade **VS 1**

Cut Grade **EXCELLENT**

ADDITIONAL GRADING INFORMATION

Polish **EXCELLENT**

Symmetry **EXCELLENT**

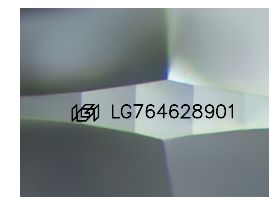
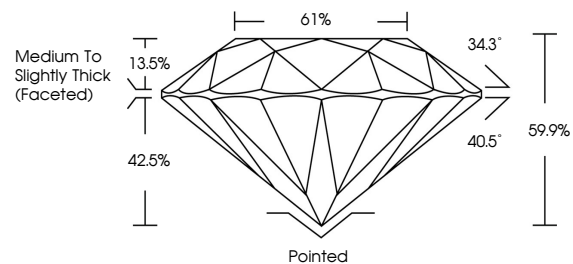
Fluorescence **NONE**

Inscription(s) **IGI LG764628901**

Comments: This Laboratory Grown Diamond was created by Chemical Vapor Deposition (CVD) growth process.

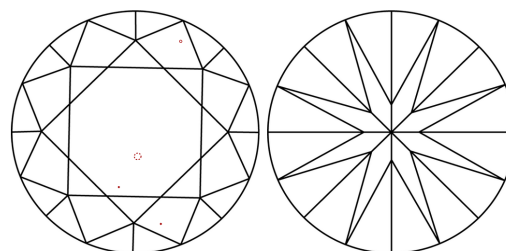
Indications of post-growth treatment.

PROPORTIONS



Sample Image Used

CLARITY CHARACTERISTICS



KEY TO SYMBOLS

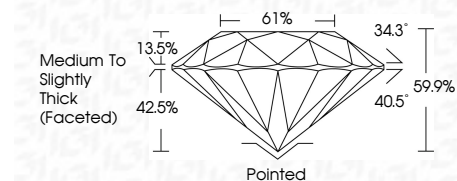
Red symbols indicate internal characteristics.
Green symbols indicate external characteristics.

COLOR

D E F G H I J Faint Very Light Light

CLARITY

FL	IF	VS ¹⁻²	VS ¹⁻²	SI ¹⁻²	I ¹⁻³
Flawless	Internally Flawless	Very Very Slightly Included	Very Slightly Included	Slightly Included	Included



ADDITIONAL GRADING INFORMATION

Polish **EXCELLENT**

Symmetry **EXCELLENT**

Fluorescence **NONE**

Inscription(s) **IGI LG764628901**

Comments: This Laboratory Grown Diamond was created by Chemical Vapor Deposition (CVD) growth process. Indications of post-growth treatment.



IGI



January 20, 2026
IGI Report No LG764628901
ROUND BRILLIANT

2.00 CARATS
Carat Weight
FANCY VIVID GREEN
Color Grade

VS 1
Clarity Grade
EXCELLENT
Cut Grade

8.10 - 8.13 X 4.86 MM
Depth
61%
61%
Girdle
Medium To Slightly Thick (Faceted)

Pointed
EXCELLENT
Symmetry
EXCELLENT
Fluorescence
NONE
Inscriptions(s)
IGI LG764628901

Comments: This Laboratory Grown Diamond was created by Chemical Vapor Deposition (CVD) growth process. Indications of post-growth treatment.