



ELECTRONIC COPY

LG758518379
Report verification at igi.org



December 19, 2025
IGI Report Number **LG758518379**
Description **LABORATORY GROWN DIAMOND**
Shape and Cutting Style **SQUARE CUSHION MODIFIED BRILLIANT**
Measurements **8.17 X 7.99 X 5.39 MM**
GRADING RESULTS
Carat Weight **3.35 CARATS**
Color Grade **FANCY VIVID YELLOW**
Clarity Grade **VVS 2**

December 19, 2025
IGI Report Number **LG758518379**
Description **LABORATORY GROWN DIAMOND**
Shape and Cutting Style **SQUARE CUSHION MODIFIED BRILLIANT**
Measurements **8.17 X 7.99 X 5.39 MM**

GRADING RESULTS

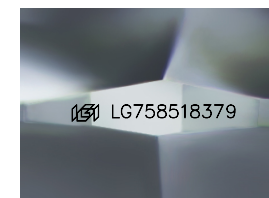
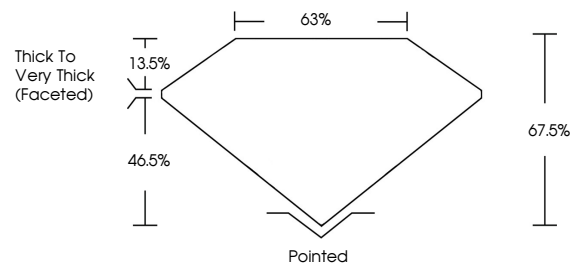
Carat Weight **3.35 CARATS**
Color Grade **FANCY VIVID YELLOW**
Clarity Grade **VVS 2**

ADDITIONAL GRADING INFORMATION

Polish **EXCELLENT**
Symmetry **EXCELLENT**
Fluorescence **NONE**
Inscription(s) **IGI LG758518379**

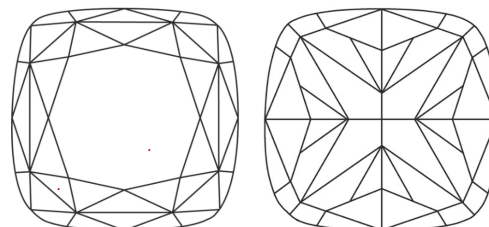
Comments: This Laboratory Grown Diamond was created by Chemical Vapor Deposition (CVD) growth process.

PROPORTIONS



Sample Image Used

CLARITY CHARACTERISTICS



KEY TO SYMBOLS

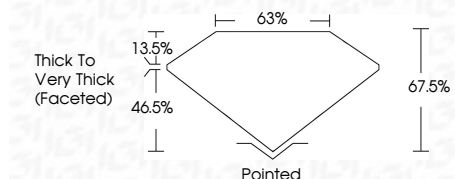
Red symbols indicate internal characteristics.
Green symbols indicate external characteristics.

COLOR

D E F G H I J Faint Very Light Light

CLARITY

FL	IF	VVS ¹⁻²	VS ¹⁻²	SI ¹⁻²	I ¹⁻³
Flawless	Internally Flawless	Very Very Slightly Included	Very Slightly Included	Slightly Included	Included



ADDITIONAL GRADING INFORMATION

Polish **EXCELLENT**
Symmetry **EXCELLENT**
Fluorescence **NONE**
Inscription(s) **IGI LG758518379**
Comments: This Laboratory Grown Diamond was created by Chemical Vapor Deposition (CVD) growth process.



December 19, 2025
IGI Report No LG758518379
SQUARE CUSHION MODIFIED BRILLIANT
8.17 X 7.99 X 5.39 MM
3.35 CARATS
FANCY VIVID YELLOW
VVS 2
67.0%
63%
Thick to Very Thick (Faceted)
Pointed
EXCELLENT
EXCELLENT
NONE
IGI LG758518379
Comments: This Laboratory Grown Diamond was created by Chemical Vapor Deposition (CVD) growth process.