



ELECTRONIC COPY

LABORATORY GROWN DIAMOND REPORT

LG561254924
Report verification at igi.org

**LABORATORY GROWN
DIAMOND REPORT**

LABORATORY GROWN DIAMOND REPORT

LABORATORY GROWN DIAMOND REPORT

December 26, 2022
IGI Report Number **LG561254924**
Description **LABORATORY GROWN
DIAMOND**
Shape and Cutting Style **CUSHION BRILLIANT**
Measurements **9.67 X 7.98 X 5.45 MM**

GRADING RESULTS

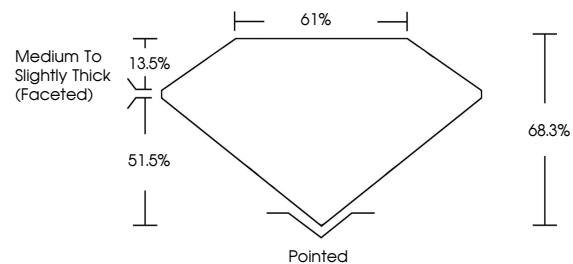
Carat Weight **3.23 CARATS**
Color Grade **G**
Clarity Grade **VS 2**

ADDITIONAL GRADING INFORMATION

Polish **EXCELLENT**
Symmetry **EXCELLENT**
Fluorescence **NONE**

Inscription(s) **LABGROWN (LGR) LG561254924**
Comments: This Laboratory Grown Diamond was created by Chemical Vapor Deposition (CVD) growth process and may include post-growth treatment. Type IIa

PROPORTIONS



CLARITY CHARACTERISTICS



KEY TO SYMBOLS

Red symbols indicate internal characteristics.
Green symbols indicate external characteristics.

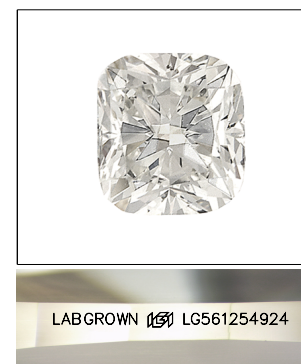
GRADING SCALES

CLARITY

IF	VVS ¹⁻²	VS ¹⁻²	SI ¹⁻²	I ¹⁻³
Internally Flawless	Very Very Slightly Included	Very Slightly Included	Slightly Included	Included

COLOR

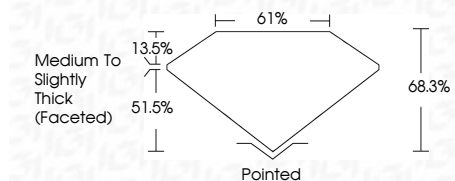
D	E	F	G	H	I	J	Faint	Very Light	Light
---	---	---	---	---	---	---	-------	------------	-------



LASERSCRIBESM

Sample Image Used

December 26, 2022
IGI Report Number **LG561254924**
Description **LABORATORY GROWN
DIAMOND**
Shape and Cutting Style **CUSHION BRILLIANT**
Measurements **9.67 X 7.98 X 5.45 MM**
GRADING RESULTS
Carat Weight **3.23 CARATS**
Color Grade **G**
Clarity Grade **VS 2**



ADDITIONAL GRADING INFORMATION

Polish **EXCELLENT**
Symmetry **EXCELLENT**
Fluorescence **NONE**
Inscription(s) **LABGROWN (LGR) LG561254924**

Comments: This Laboratory Grown Diamond was created by Chemical Vapor Deposition (CVD) growth process and may include post-growth treatment. Type IIa



December 26, 2022	3.23 CARATS	G	VS 2	61%	Pointed
IGI Report No LG561254924	Carat Weight	Color Grade	Clarity Grade	Table	Culet
CUSHION BRILLIANT	9.67 X 7.98 X 5.45 MM		Medium to Slightly Thick (Faceted)		Polish
					Symmetry
					Fluorescence
					Inscription(s)
					LABGROWN (LGR) LG561254924

Comments: This Laboratory Grown Diamond was created by Chemical Vapor Deposition (CVD) growth process and may include post-growth treatment. Type IIa