



ELECTRONIC COPY

LABORATORY GROWN DIAMOND REPORT

August 19, 2023
 IGI Report Number **LG593367336**
 Description **LABORATORY GROWN
DIAMOND**
 Shape and Cutting Style **SQUARE CUSHION BRILLIANT**
 Measurements **8.01 X 7.81 X 5.26 MM**

GRADING RESULTS

Carat Weight **3.05 CARATS**
 Color Grade **FANCY VIVID YELLOW**
 Clarity Grade **VS 1**

ADDITIONAL GRADING INFORMATION

Polish **EXCELLENT**
 Symmetry **EXCELLENT**
 Fluorescence **NONE**
 Inscription(s) **IGI LG593367336**

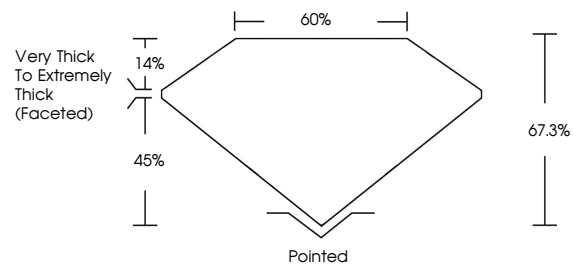
Comments: As Grown - No indication of post-growth treatment.
 This Laboratory Grown Diamond was created by High Pressure High Temperature (HPHT) growth process.

Secondary color: Orange

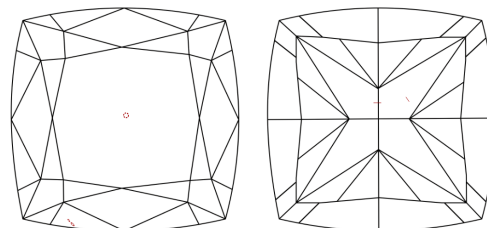
LABORATORY GROWN DIAMOND REPORT

LG593367336
 Report verification at igi.org

PROPORTIONS



CLARITY CHARACTERISTICS



KEY TO SYMBOLS

Red symbols indicate internal characteristics.
 Green symbols indicate external characteristics.

**LABORATORY GROWN
DIAMOND REPORT**

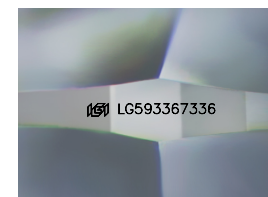
GRADING SCALES

CLARITY

IF	VVS ¹⁻²	VS ¹⁻²	SI ¹⁻²	I ¹⁻³
Internally Flawless	Very Very Slightly Included	Very Slightly Included	Slightly Included	Included

COLOR

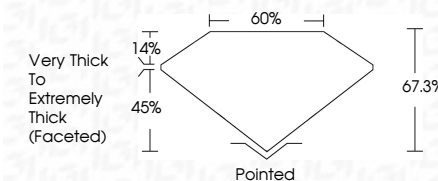
D	E	F	G	H	I	J	Faint	Very Light	Light
Light Tint	Fancy Light	Fancy	Fancy Intense	Fancy Vivid					



Sample Image Used

LABORATORY GROWN DIAMOND REPORT

August 19, 2023
 IGI Report Number **LG593367336**
 Description **LABORATORY GROWN
DIAMOND**
 Shape and Cutting Style **SQUARE CUSHION BRILLIANT**
 Measurements **8.01 X 7.81 X 5.26 MM**
GRADING RESULTS
 Carat Weight **3.05 CARATS**
 Color Grade **FANCY VIVID YELLOW**
 Clarity Grade **VS 1**



ADDITIONAL GRADING INFORMATION

Polish **EXCELLENT**
 Symmetry **EXCELLENT**
 Fluorescence **NONE**
 Inscription(s) **IGI LG593367336**
 Comments: As Grown - No indication of post-growth treatment.
 This Laboratory Grown Diamond was created by High Pressure High Temperature (HPHT) growth process.
 Secondary color: Orange



August 19, 2023
 IGI Report No **LG593367336**
SQUARE CUSHION BRILLIANT
 8.01 X 7.81 X 5.26 MM
 Carat Weight **3.05 CARATS**
 Color Grade **FANCY VIVID YELLOW**
 Clarity Grade **VS 1**
 Depth **67.3%**
 Table **60%**
 Girdle **Very Thick to Extremely Thick (Faceted)**
 Culet **Pointed**
 Polish **EXCELLENT**
 Symmetry **EXCELLENT**
 Fluorescence **NONE**
 Inscription(s) **IGI LG593367336**

Comments: As Grown - No indication of post-growth treatment.
 This Laboratory Grown Diamond was created by High Pressure High Temperature (HPHT) growth process.
 Secondary color: Orange