



523286351

**DIAMOND REPORT**

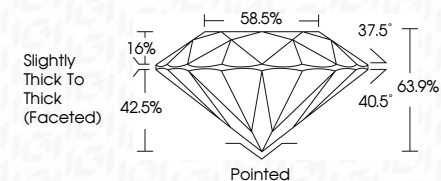
**ELECTRONIC COPY**



November 21, 2022  
IGI Report Number 523286351  
Description NATURAL DIAMOND  
Shape and Cutting Style ROUND BRILLIANT  
Measurements 7.79 - 7.88 x 5.01 mm

**GRADING RESULTS**

Carat Weight 2.00 CARATS  
Color Grade K  
Clarity Grade VS 1  
Cut Grade VERY GOOD



November 21, 2022  
IGI Report Number 523286351  
Description NATURAL DIAMOND  
Shape and Cutting Style ROUND BRILLIANT  
Measurements 7.79 - 7.88 x 5.01 mm

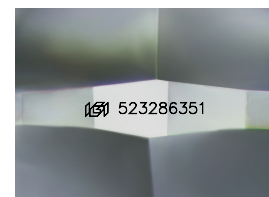
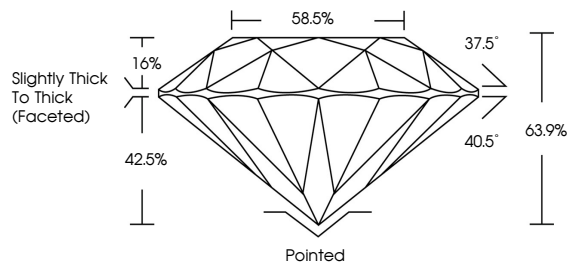
**GRADING RESULTS**

Carat Weight 2.00 CARATS  
Color Grade K  
Clarity Grade VS 1  
Cut Grade VERY GOOD

**ADDITIONAL GRADING INFORMATION**

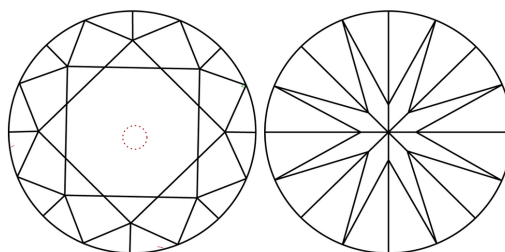
Polish EXCELLENT  
Symmetry VERY GOOD  
Fluorescence NONE  
Inscription(s) IGI 523286351

**PROPORTIONS**



Sample Image Used

**CLARITY CHARACTERISTICS**



**KEY TO SYMBOLS**

Red symbols indicate internal characteristics.  
Green symbols indicate external characteristics.

**COLOR**

D - F	G - J	K - M	N - R	S - Z	FANCY
Colorless	Near Colorless	Slightly Tinted	Very Light Color	Light Color	

**CLARITY**

IF	VS <sup>1-2</sup>	VS <sup>1-2</sup>	SI <sup>1-2</sup>	I <sup>1-3</sup>
Internally Flawless	Very Very Slightly Included	Very Slightly Included	Slightly Included	Included

**ADDITIONAL GRADING INFORMATION**

Polish EXCELLENT  
Symmetry VERY GOOD  
Fluorescence NONE  
Inscription(s) IGI 523286351



**IGI**



November 21, 2022  
IGI Report No. 523286351  
NATURAL DIAMOND  
ROUND BRILLIANT  
7.79 - 7.88 x 5.01 mm  
Carat Weight 2.00 CARATS  
Color Grade K  
Clarity Grade VS 1  
Cut Grade VERY GOOD  
Depth 63.9%  
Table 58.5%  
Grade Slightly Thick To Thick (Faceted)  
Culet Pointed  
Polish EXCELLENT  
Symmetry VERY GOOD  
Fluorescence NONE  
Inscription(s) IGI 523286351